

# PROFESSIONAL/MEDICAL OFFICE FOR SALE OR LEASE CLOSE TO LAC+USC MEDICAL CENTER



Remodeled 1,958± SF Building on 5,230± SF Land  
1155 N Mission Road, Los Angeles, CA 90033

**MAJOR PROPERTIES**  
REAL ESTATE  
Commercial • Industrial • Residential  
Offering Memorandum

**1155 N MISSION ROAD  
LOS ANGELES, CA 90033**

## Property Details

Building Area:*	1,958± SF
Land Area:**	5,230± SF
Year Built:	1946
Construction:	Wood Frame & Stucco
Restrooms:	1
Parking:	5± Surface Spaces
Power:	None
Zoning:	LA M2-1VL
Assessor's Parcel #:	5210-007-001
TOC:	Tier 3
Opportunity Zone:	Yes

\* 130± SF is unpermitted

\*\* Based on plat map

## Property Highlights

- Commercial purchase or lease opportunity
- Ideal for professional or medical office use (doctor, dentist, chiropractor, physical therapy, etc.)
- Front and rear access
- Recently remodeled!
- Located just a few blocks west of University of Southern California Health Sciences Campus and Keck Hospital of USC
- Storefront windows with abundant natural light
- Rear secure, gated parking for 5 vehicles
- Northwest corner of Mission Road and Sichel Street
- 97' frontage on busy Mission Road
- 26,191 vehicles per day traffic count (2022)
- Easy freeway access: 2 blocks east of I-5 freeway and 1/4-mile north of I-10 freeway
- Just minutes from Downtown Los Angeles

**Asking Price: \$1,200,000**

**(\$612.87 Per SF Building | \$229.45 Per SF Land)**

**Lease Rental: \$5,000 Per Month (\$2.55 Per SF NNN)**

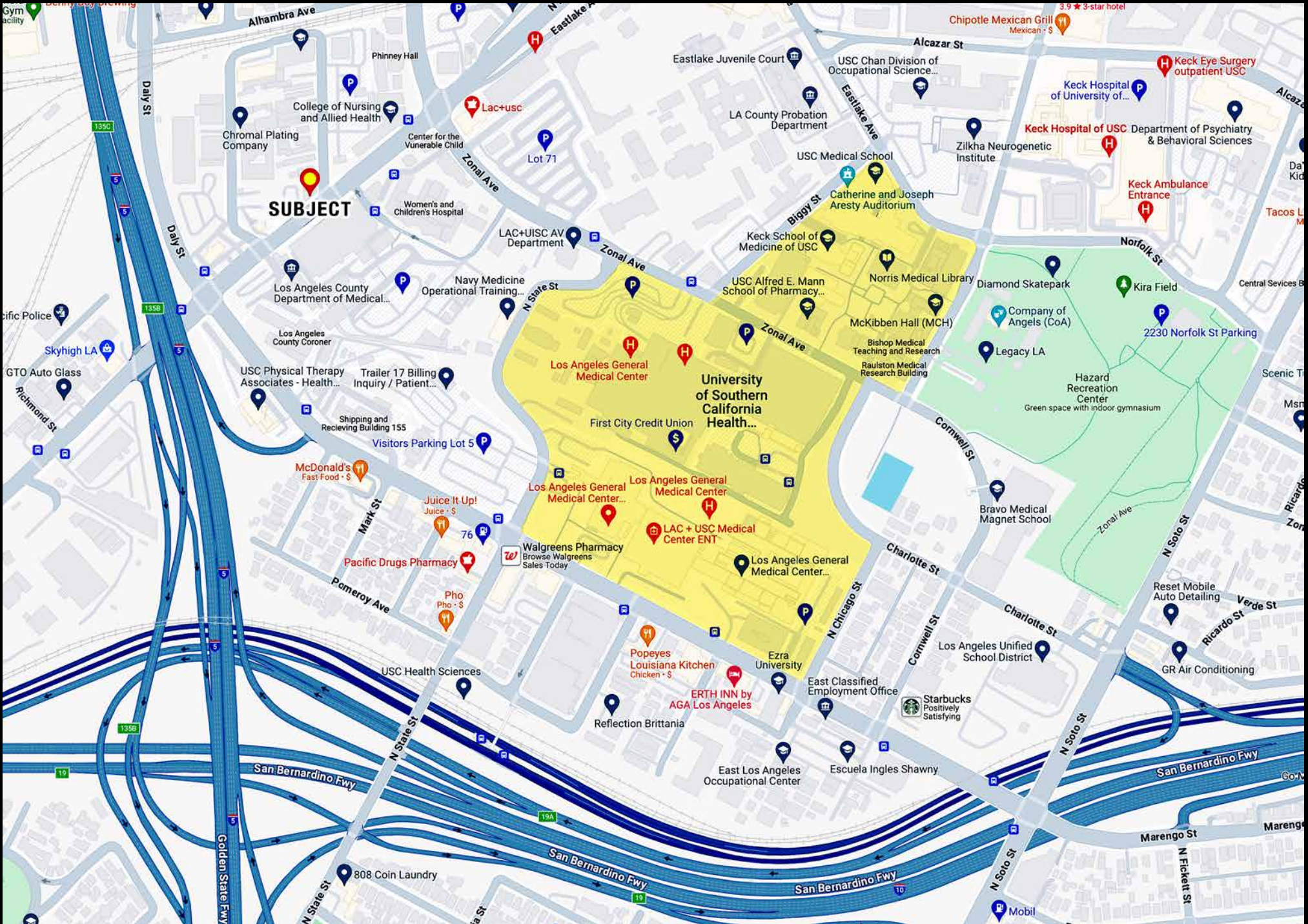






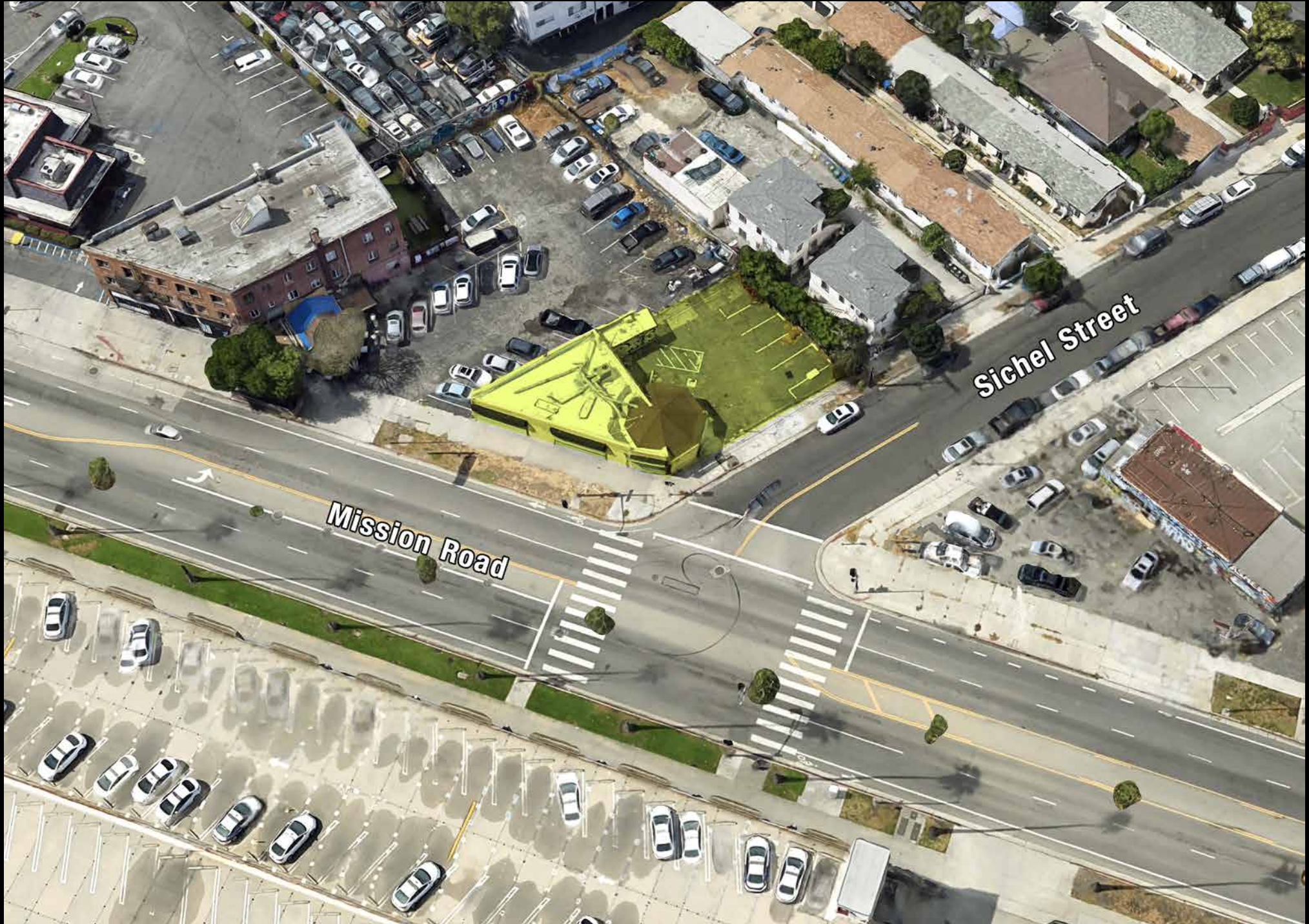


# Located Close to LAC+USC Medical Center



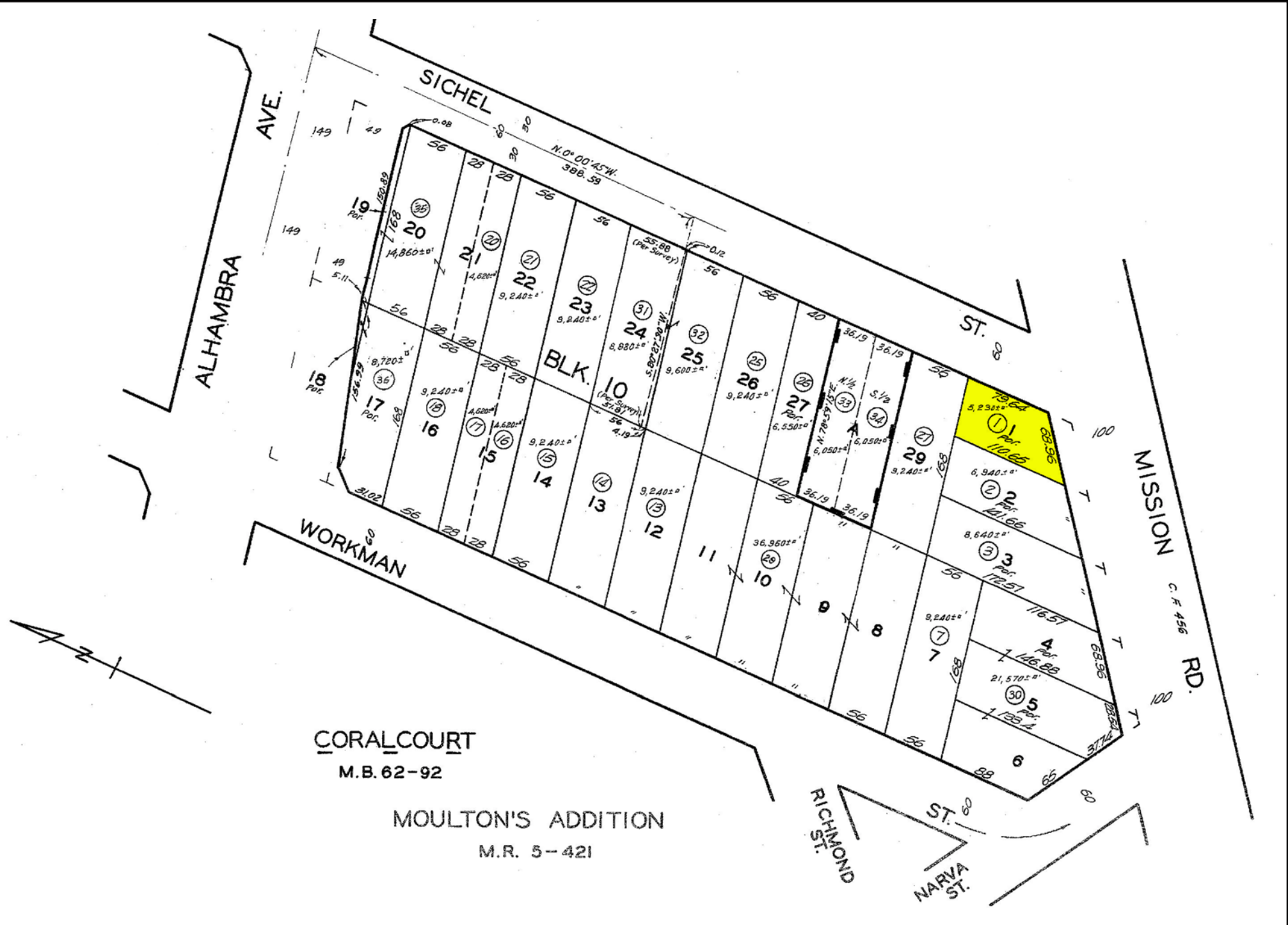


Aerial Photo

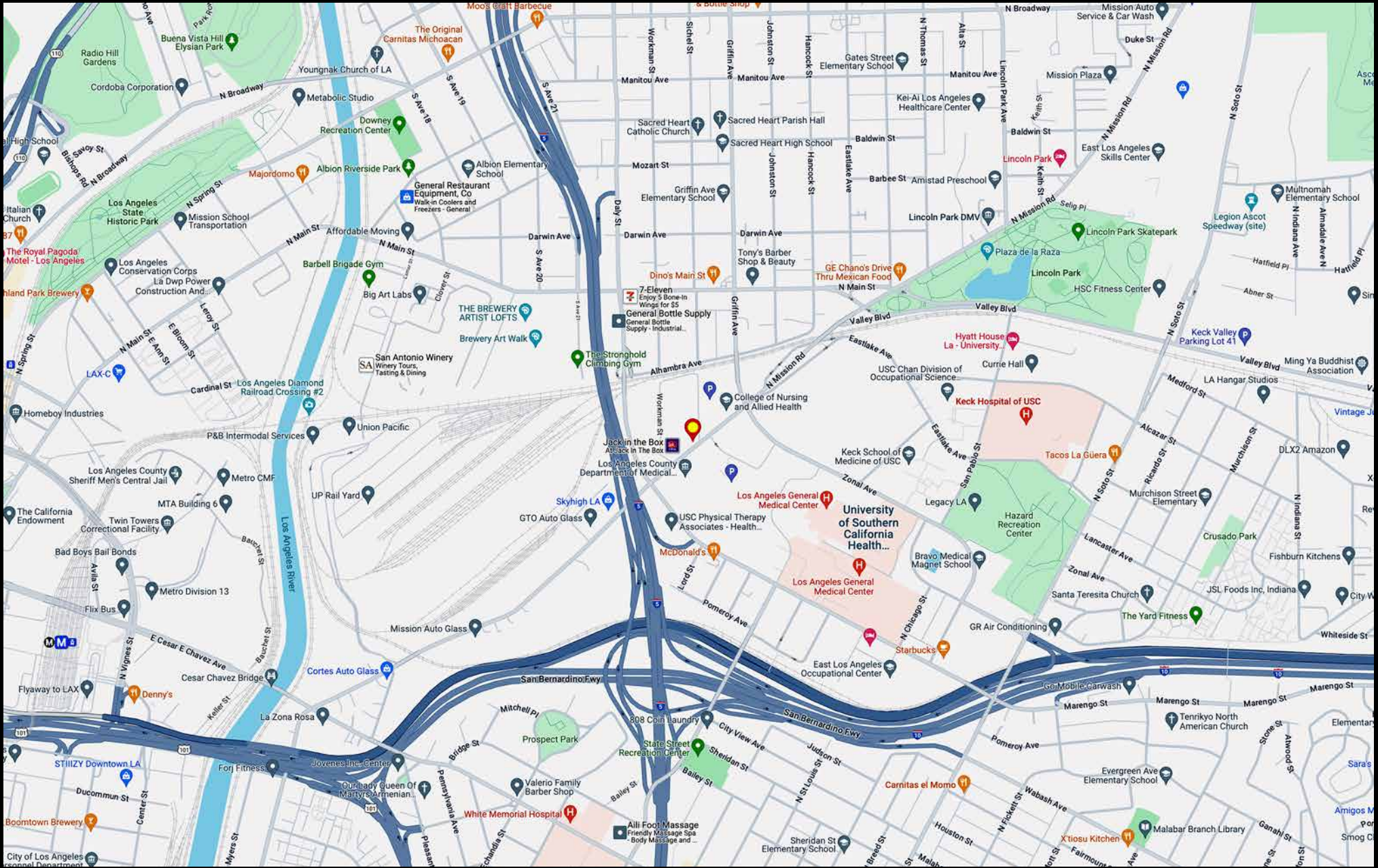




# Plat Map



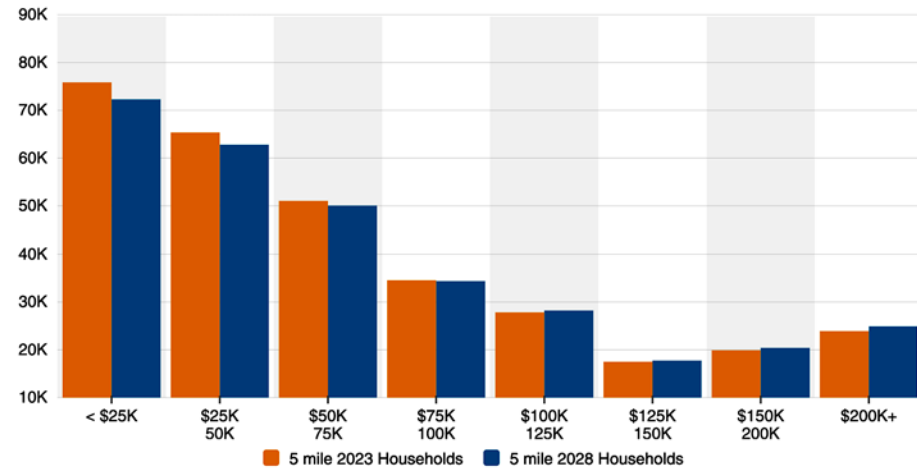
# Area Map



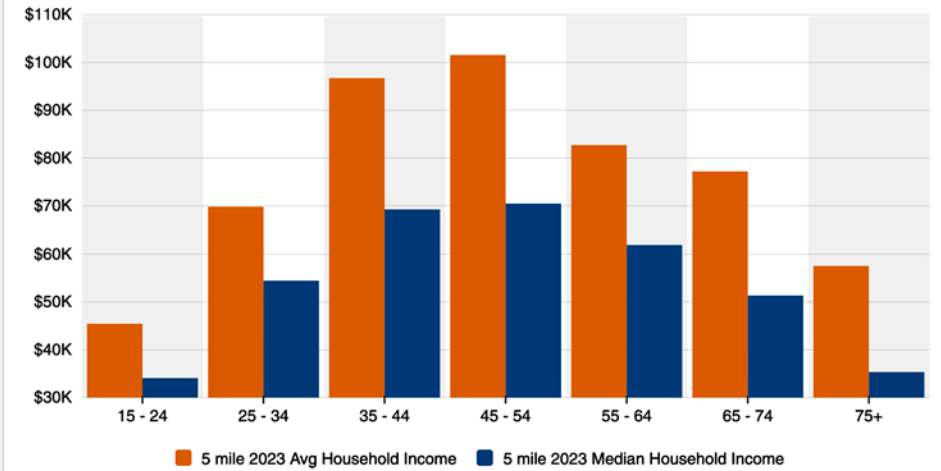


# Neighborhood Demographics

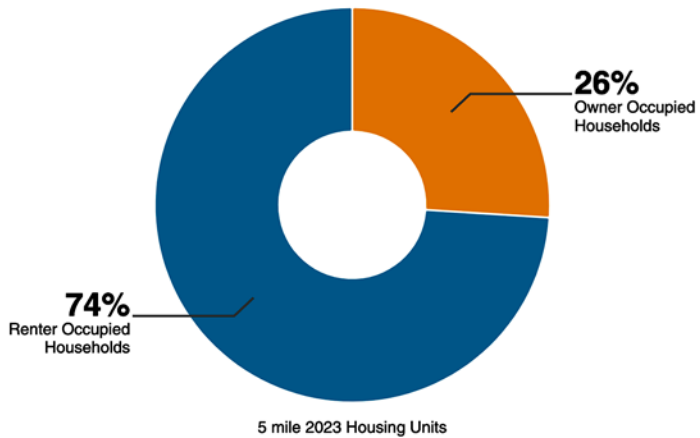
Household Income



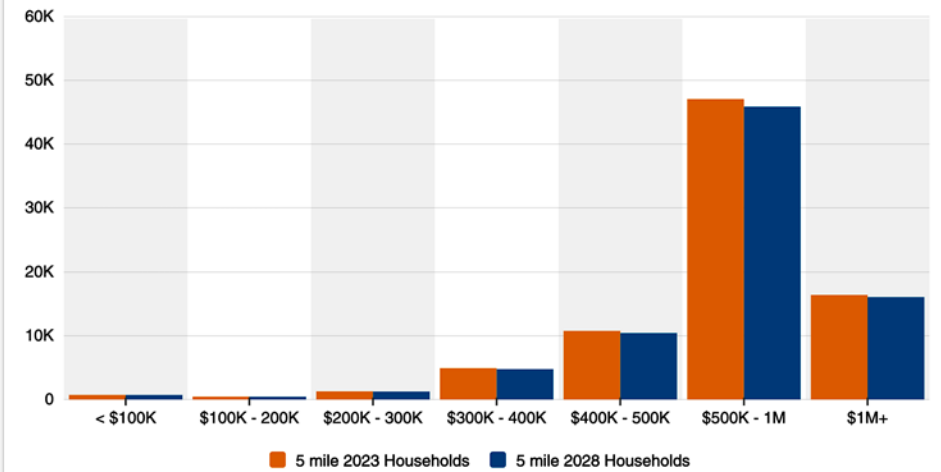
Household Income By Age



Housing Occupancy



Home Values





1155 N Mission Road  
Los Angeles, CA 90033

1,958± SF Building  
5,230± SF of Land

Recently Remodeled! Must See!

Professional/Medical Office With  
Secure, Gated Parking

Heavy Traffic Corner Location  
Close to LAC+USC Medical Center



*Exclusively offered by*



**Jesse McKenzie**  
Senior Vice President  
213.747.4156 office  
714.883.6875 mobile  
jesse@majorproperties.com  
Lic. 01939062



**Bradley A Luster**  
President  
213.747.4154 office  
213.276.2483 mobile  
brad@majorproperties.com  
Lic. 00913803

The information contained in this offering material is confidential and furnished solely for the purpose of a review by prospective Buyers or Tenants of the subject property and is not to be used for any other purpose or made available to any other person without the express written consent of Major Properties.

This Brochure was prepared by Major Properties. It contains summary information pertaining to the Property and does not purport to be all-inclusive or to contain all of the information that a prospective Buyer or Tenant may desire. All information is provided for general reference purposes only and is subject to change. The summaries do not purport to be complete or accurate descriptions of the full documents involved, nor do they constitute a legal analysis of such documents.

This information has been secured from sources we believe to be reliable. We make no representations or warranties, expressed or implied, as to the accuracy of the information. References to square footage or age are approximate. Recipient of this report must verify the information and bears all risk for any inaccuracies.