

CLEAN MULTI-USE PROPERTY FOR LEASE

Warehouse, Retail, Religious Use

2,400± Sq.Ft.



3921 E OLYMPIC BLVD, LOS ANGELES, CA 90023

PROPERTY HIGHLIGHTS

- Excellent multi-use space available
- Great for warehouse, religious use, market, general retail
- Heavy traffic location just east of Indiana Street
- Easy freeway access: 1-mile west of 710 freeway and 3/4-mile south of 60 freeway
- Fantastic exposure, visibility, and signage
- Clean, open floor plan with high ceiling clearance
- Skylights, rear yard, abundant street parking
- Lease rental: \$3,000 per month (\$1.25 per sq.ft. MG)
- Term: Submit — Available for occupancy within 30 days

For More Information, Please Contact

SION KHAKSHOUR

213.210.7492

sion@majorproperties.com

LIC. 00697373

PROPERTY DETAILS

Available Area	2,400± Sq.Ft.
Total Building Area	4,318± Sq.Ft.
Zone	LC M1
Year Built	1956
Construction	Masonry
Ceiling Height.....	16'
Office Area	TBD
Restrooms	2
Parking	Street
Assessor's Parcel Number ...	5242-008-013

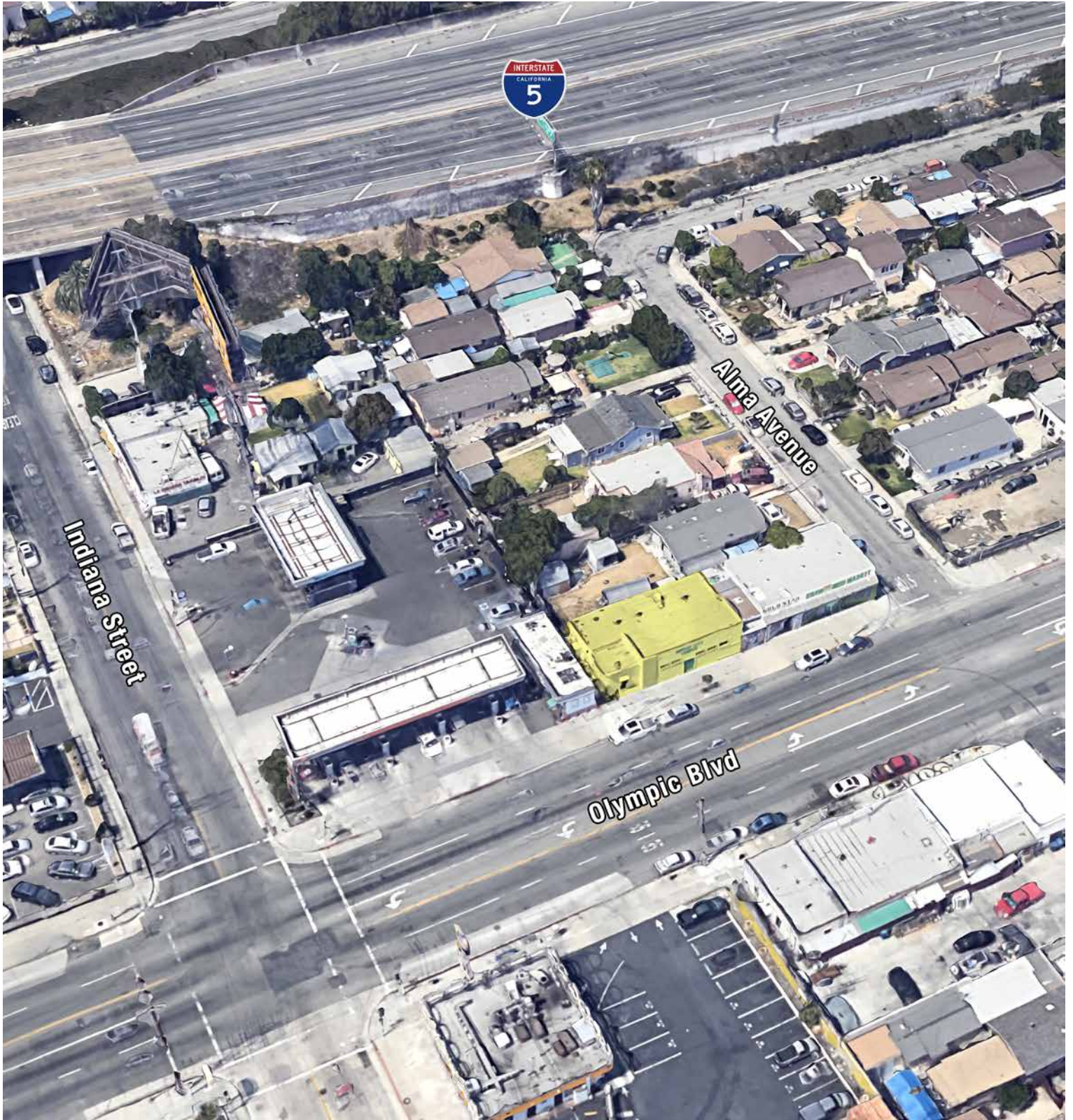
The information contained herein is furnished by sources we deem reliable, but for which we assume no liability. It is given in confidence and with the understanding that all negotiations pertaining to the property be handled through the listing office. All measurements are approximate.

CLEAN MULTI-USE PROPERTY FOR LEASE

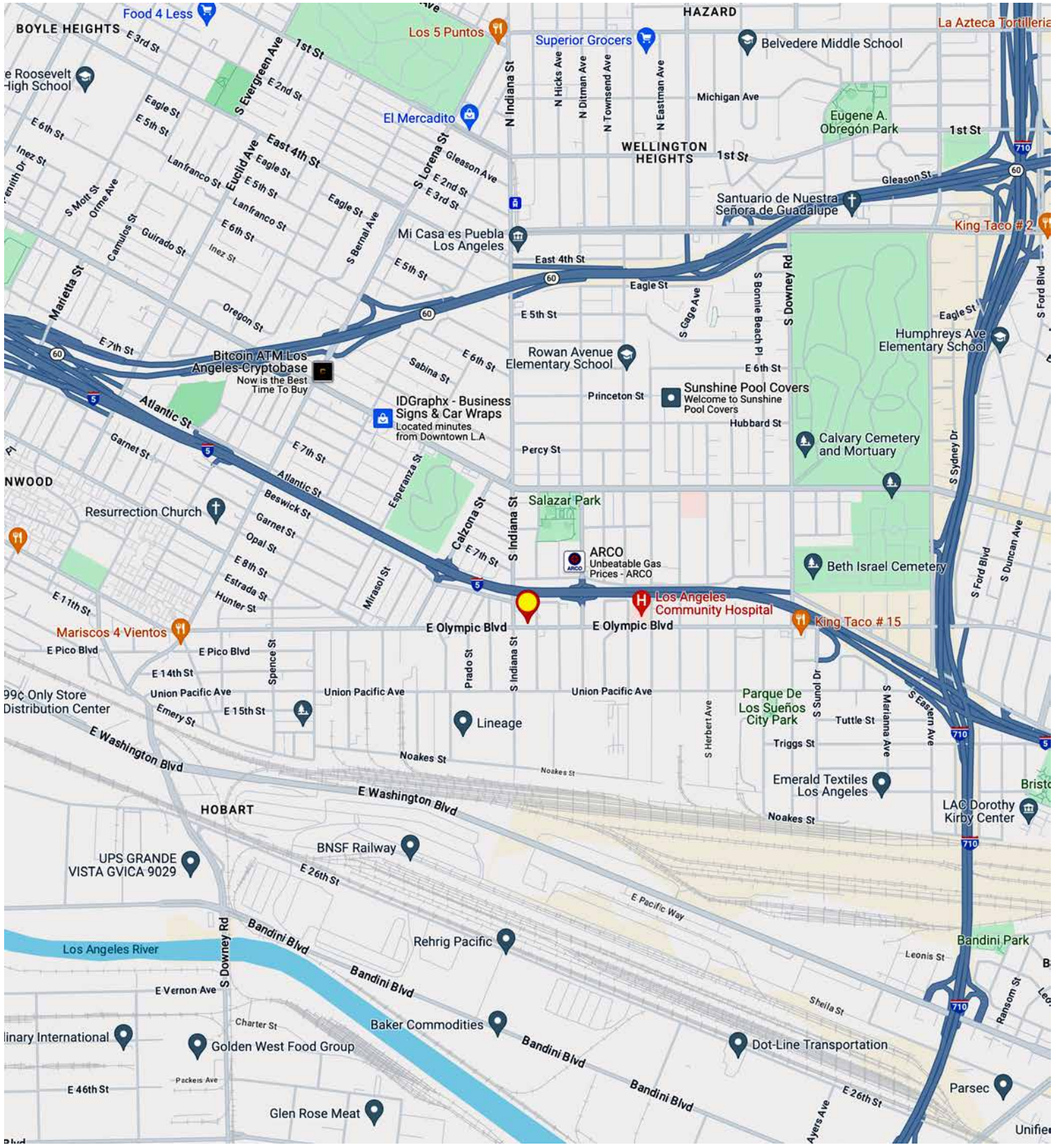
3921 E OLYMPIC BLVD, LOS ANGELES, CA 90023



CLEAN MULTI-USE PROPERTY FOR LEASE



CLEAN MULTI-USE PROPERTY FOR LEASE



MAJOR PROPERTIES
REAL ESTATE
Commercial • Industrial • Residential

1200 West Olympic Boulevard, Los Angeles, California 90015
213.747.4151 • fax 213.749.7972 • www.majorproperties.com

