

# CREATIVE OFFICE/STUDIO SPACE FOR LEASE



*Rent Reduced!*

1545 VENICE BLVD, LOS ANGELES, CA 90006

**MAJOR PROPERTIES**  
REAL ESTATE  
Commercial & Industrial Specialists

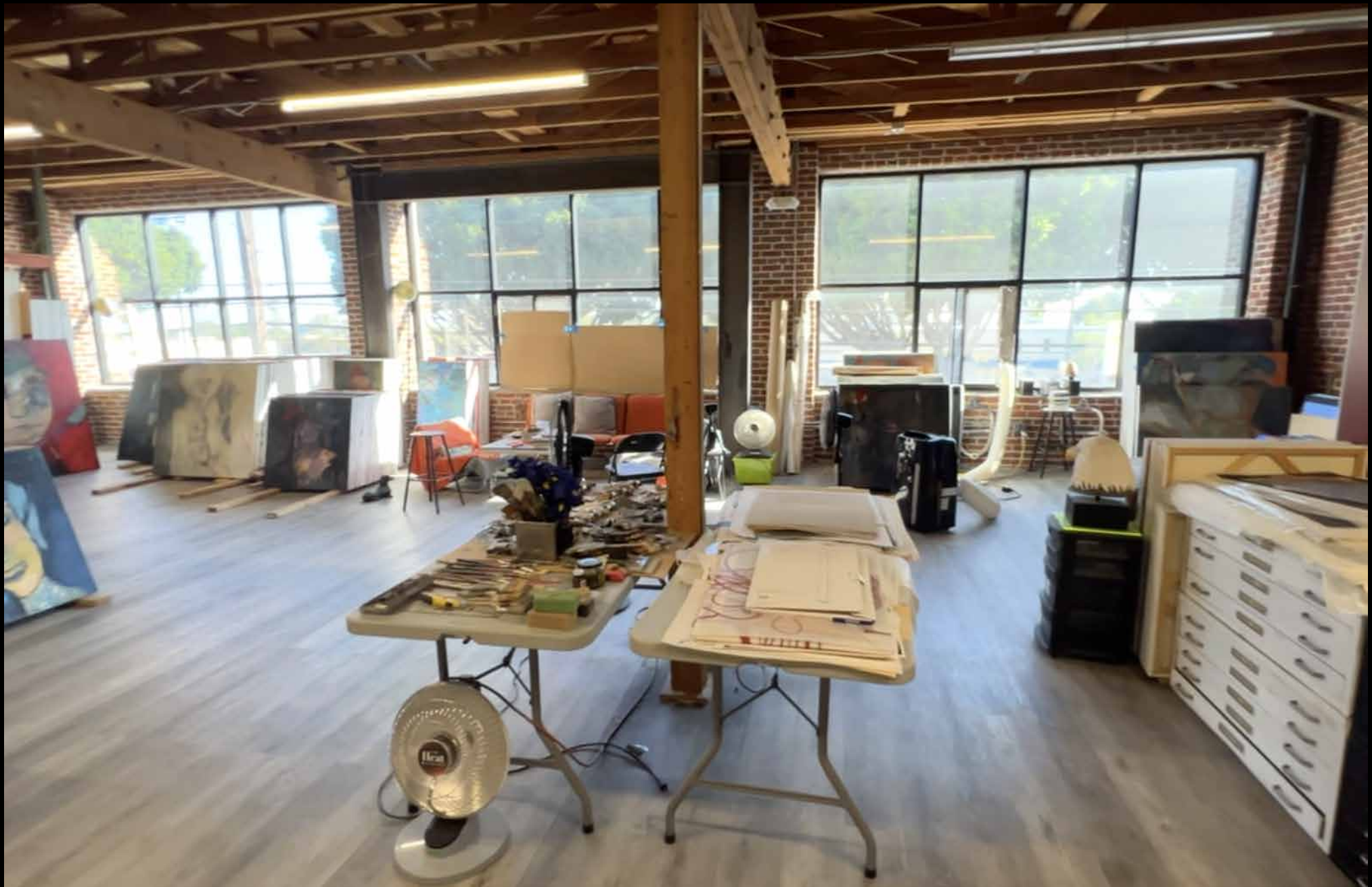
## 1545 VENICE BLVD, LOS ANGELES, CA 90006

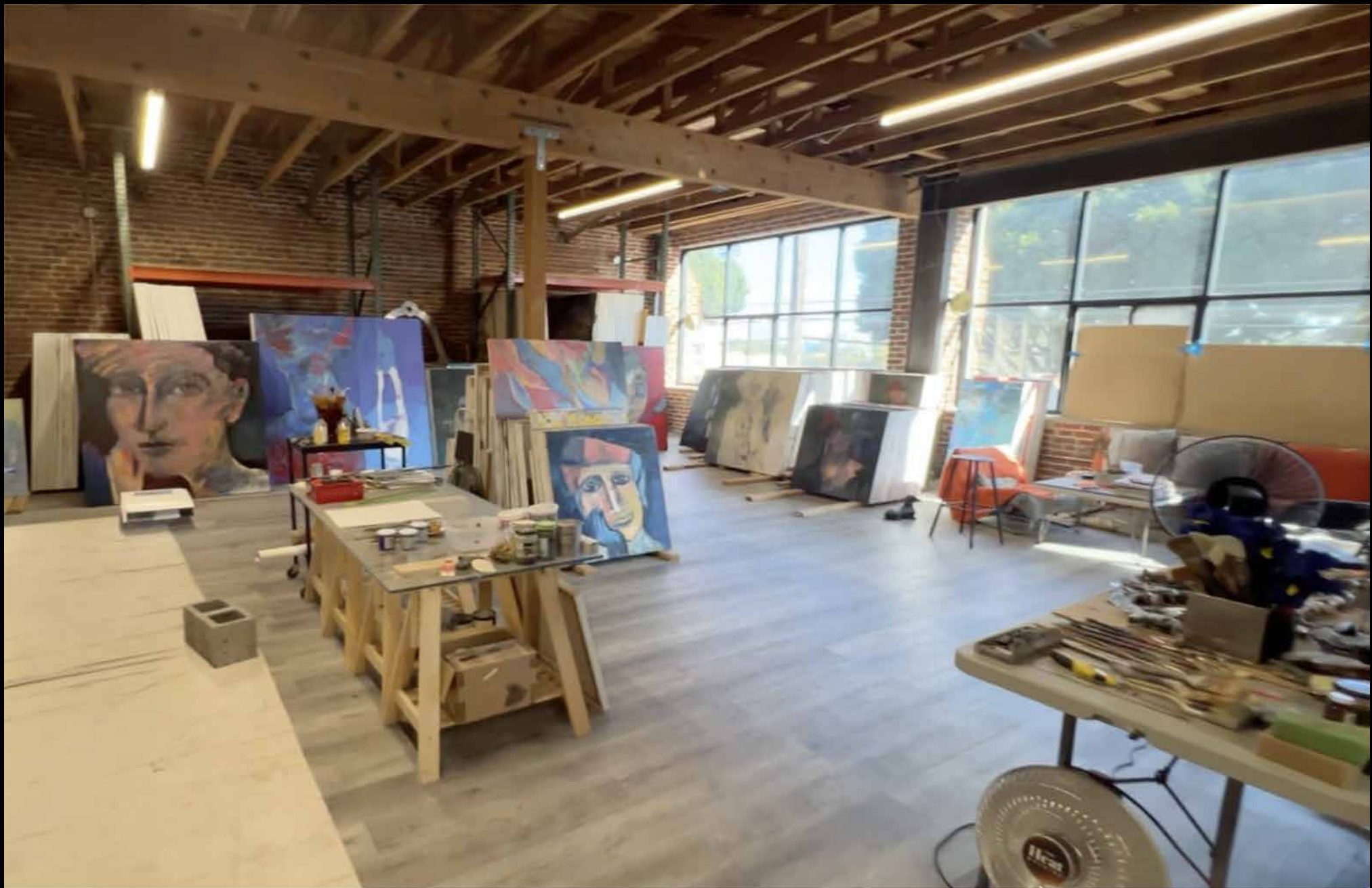
- 1,750± SF second floor unit available
- Many possible uses!  
Creative, flex, office, studio, gallery, etc.
- Part of larger recently renovated building
- Spacious, open floor plan
- Sandblasted red brick
- High ceiling clearance
- Upgraded power and electrical, newer HVAC, restrooms and roof
- Shared on-site gated parking with access from Venice Blvd and alley
- Great location one mile west of Convention Center, Staples Center and LA LIVE
- 4 blocks north of Santa Monica (I-10) Freeway

Lease Rental: ~~\$2,600~~ \$2,300 Per Month (\$1.31 Per SF MG)

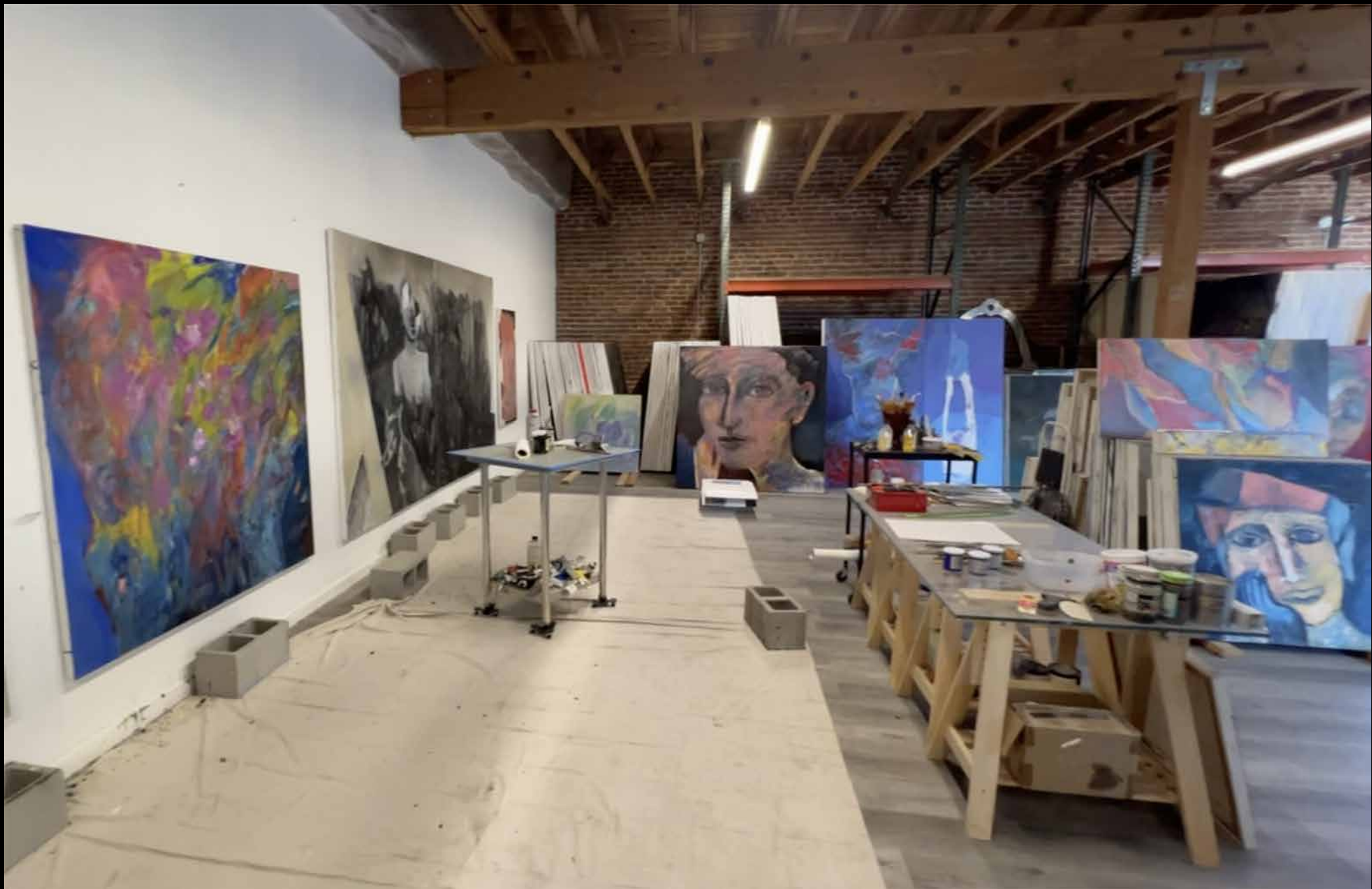






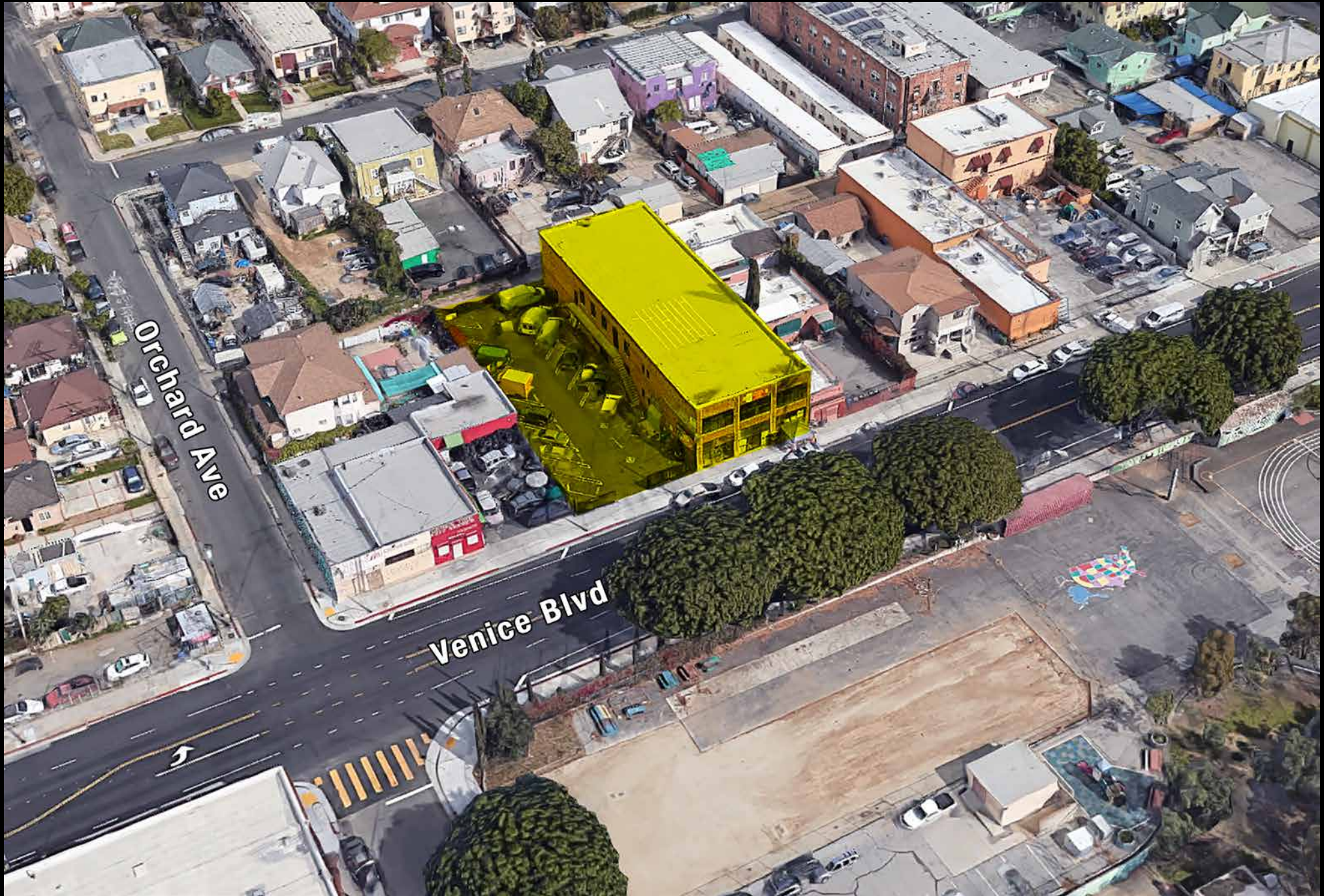






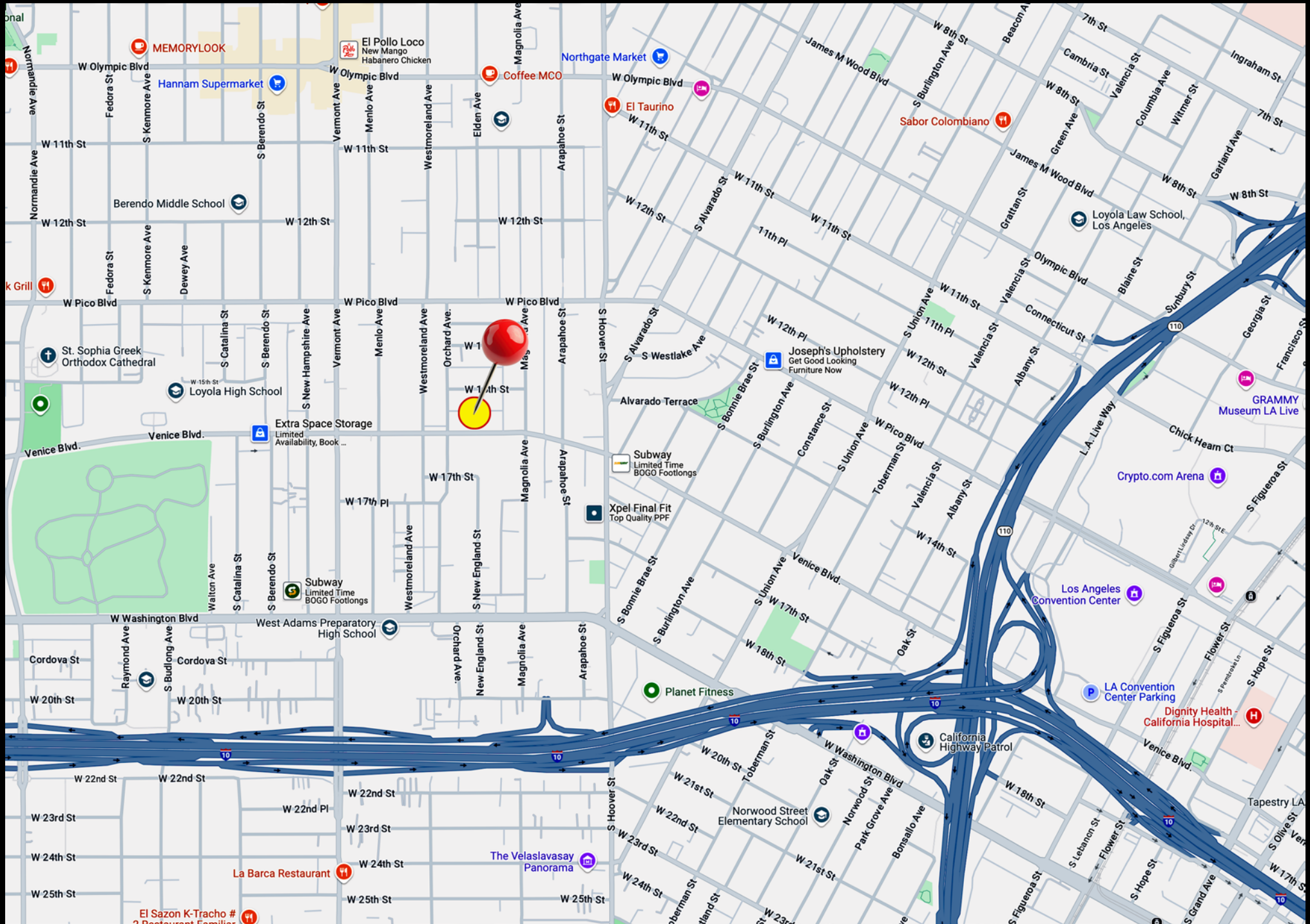


# Property Aerial





# Area Map



1545 Venice Blvd  
Los Angeles, CA 90006

1,750± Sq.Ft.  
Second Floor Unit Available

Creative Office/Studio Loft

***Rent Reduced!***



*Exclusively offered by*

**Daniel Moussazadeh**

Sales Associate

**213.747.7959** office

**310.999.9437** mobile

**daniel@majorproperties.com**

Lic. 02058572

**MAJOR PROPERTIES**

1200 W Olympic Blvd  
Los Angeles, CA 90015

[majorproperties.com](http://majorproperties.com)

