

LEASE

MAJOR PROPERTIES
REAL ESTATE
Commercial • Industrial

2226
WHITTIER
BLVD

≈ 3,234 SF
RETAIL OR
OFFICE SPACE

LEASE DETAILS

2226 WHITTIER BLVD LOS ANGELES, CA 90023

Available Space	Unit 2203 Approx. 3,234 SF 1,684 SF 1st floor & 1,550 SF basement
Lease Rate	\$3,350/mo. Modified Gross
Use	Office/Retail/Creative
Tenancy	Multiple
Parking	2-car parking for this unit
Frontage	Whittier Blvd
Stories	3
Zoning	C2
APN	5189-001-018

- Character-rich interior with exposed brick & natural light from skylights.
- Below Market Rent with Significant Upside
- High-Traffic Location Along Whittier Blvd – Strong Visibility & Foot Traffic
- Proximity to Downtown LA – Minutes from the Arts District & Little Tokyo
- Onsite Parking Spaces– Convenient Tenant & Customer Access
- Easy Access to Major Freeways – I-5, I-10, I-710, & SR-60

Exclusively listed by

JESSE MCKENZIE

Senior Vice President

714.883.6875

jesse@majorproperties.com

CalBRE License # 01939062

BRADLEY A LUSTER

President

213.276.2483

brad@majorproperties.com

CalBRE License # 00913803

MAJOR PROPERTIES
REAL ESTATE
Commercial • Industrial

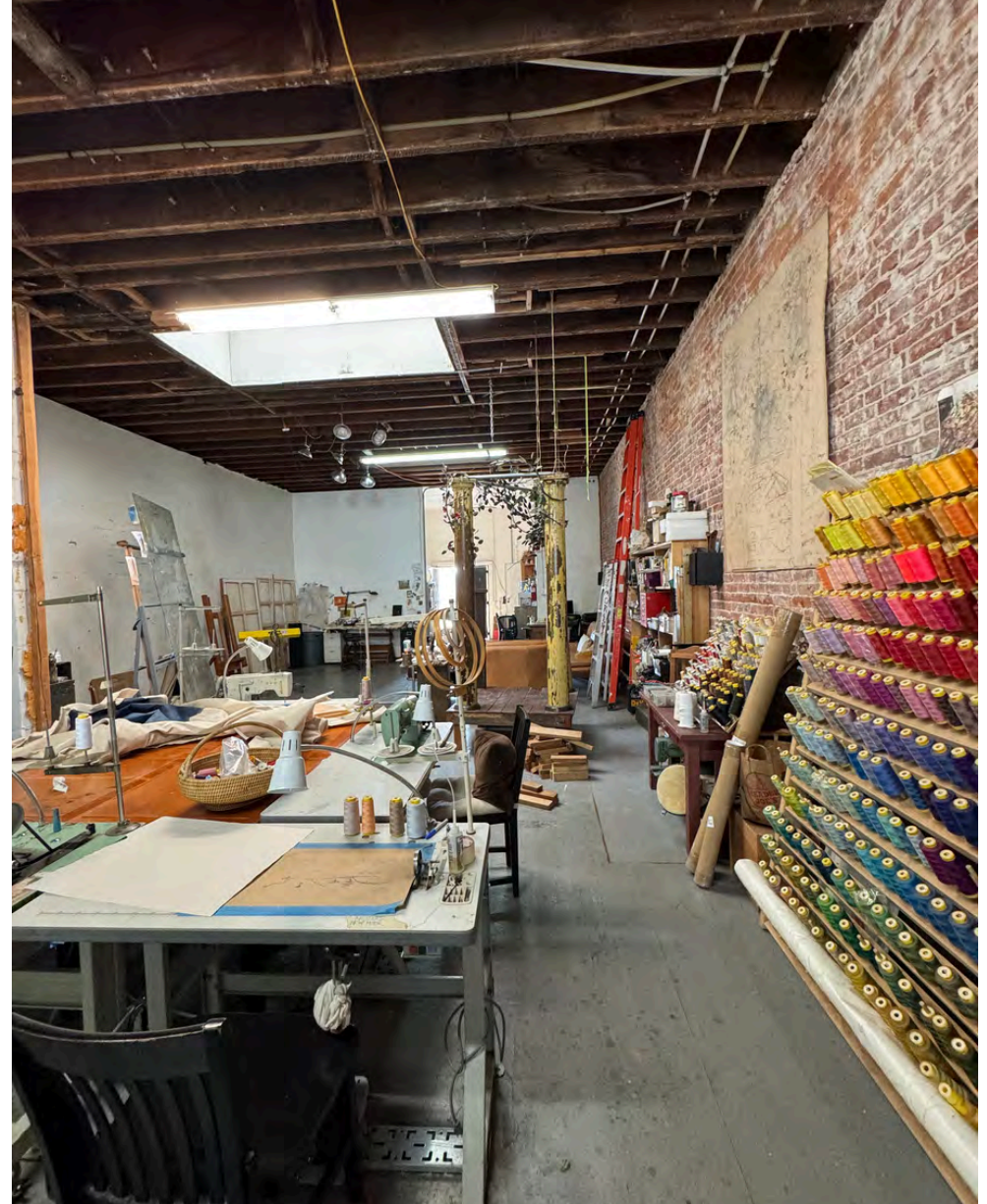
LEASE

2226 WHITTIER BLVD LOS ANGELES, CA 90023



LEASE

2226 WHITTIER BLVD LOS ANGELES, CA 90023



Fashion District



GIRL & THE GOAT

Arts District

DTLA

Little Tokyo



THE RIBBON OF LIGHT -
6TH ST BRIDGE



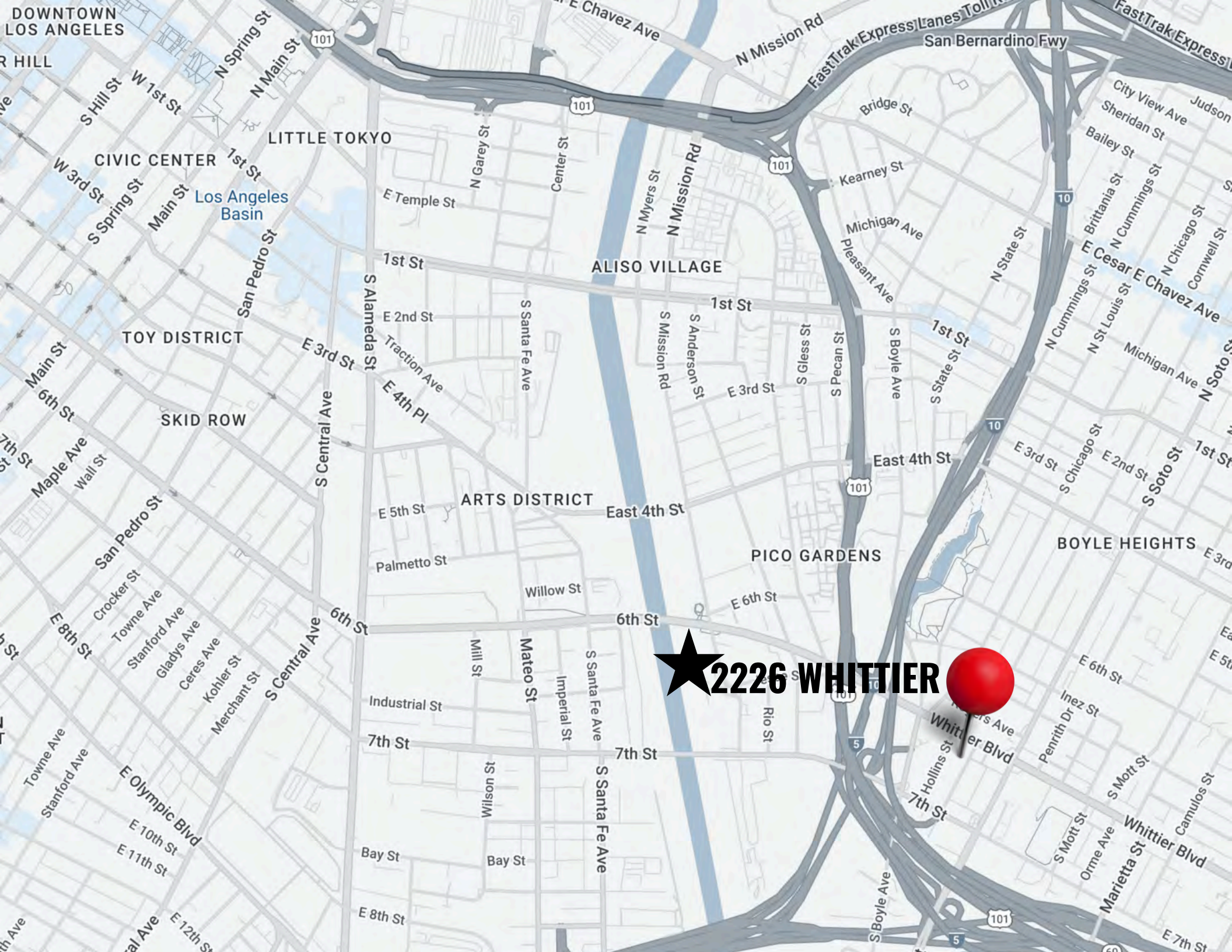
Boyle Heights

S BOYLE AVE

★ 2226 WHITTIER

S CHICAGO ST

WHITTIER BLVD



★ 2226 WHITTIER

**FOR MORE INFORMATION REGARDING THIS
OPPORTUNITY, PLEASE CONTACT:**



JESSE MCKENZIE

Senior Vice President

714.883.6875

jesse@majorproperties.com

CalBRE License # 01939062



BRADLEY A LUSTER

President

213.276.2483

brad@majorproperties.com

CalBRE License # 00913803

**2226
WHITTIER
BLVD**

MAJOR PROPERTIES
REAL ESTATE
Commercial • Industrial