

3,500± SF INDUSTRIAL FACILITY FOR LEASE

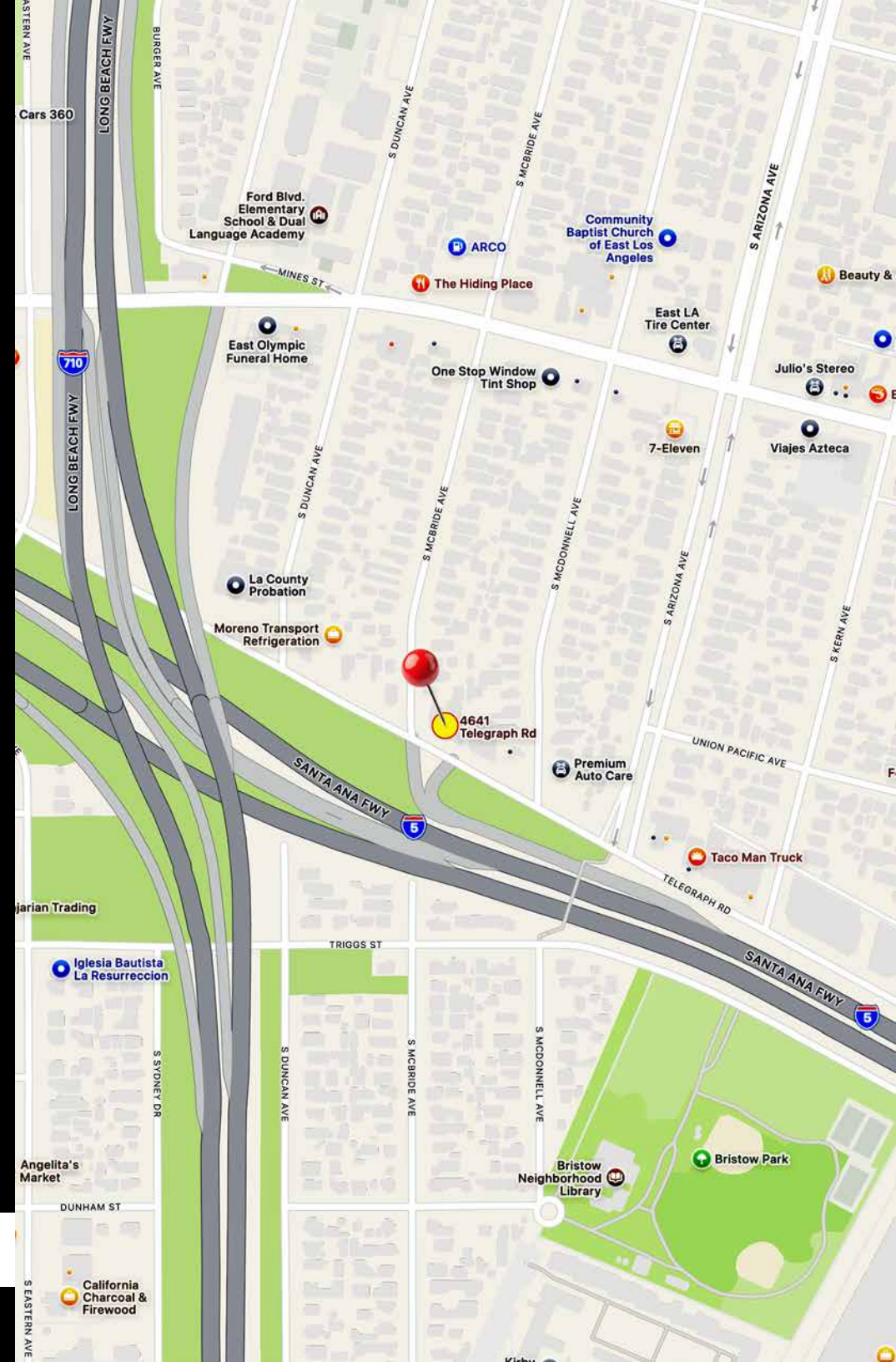


4641 Telegraph Rd, Los Angeles, CA 90022

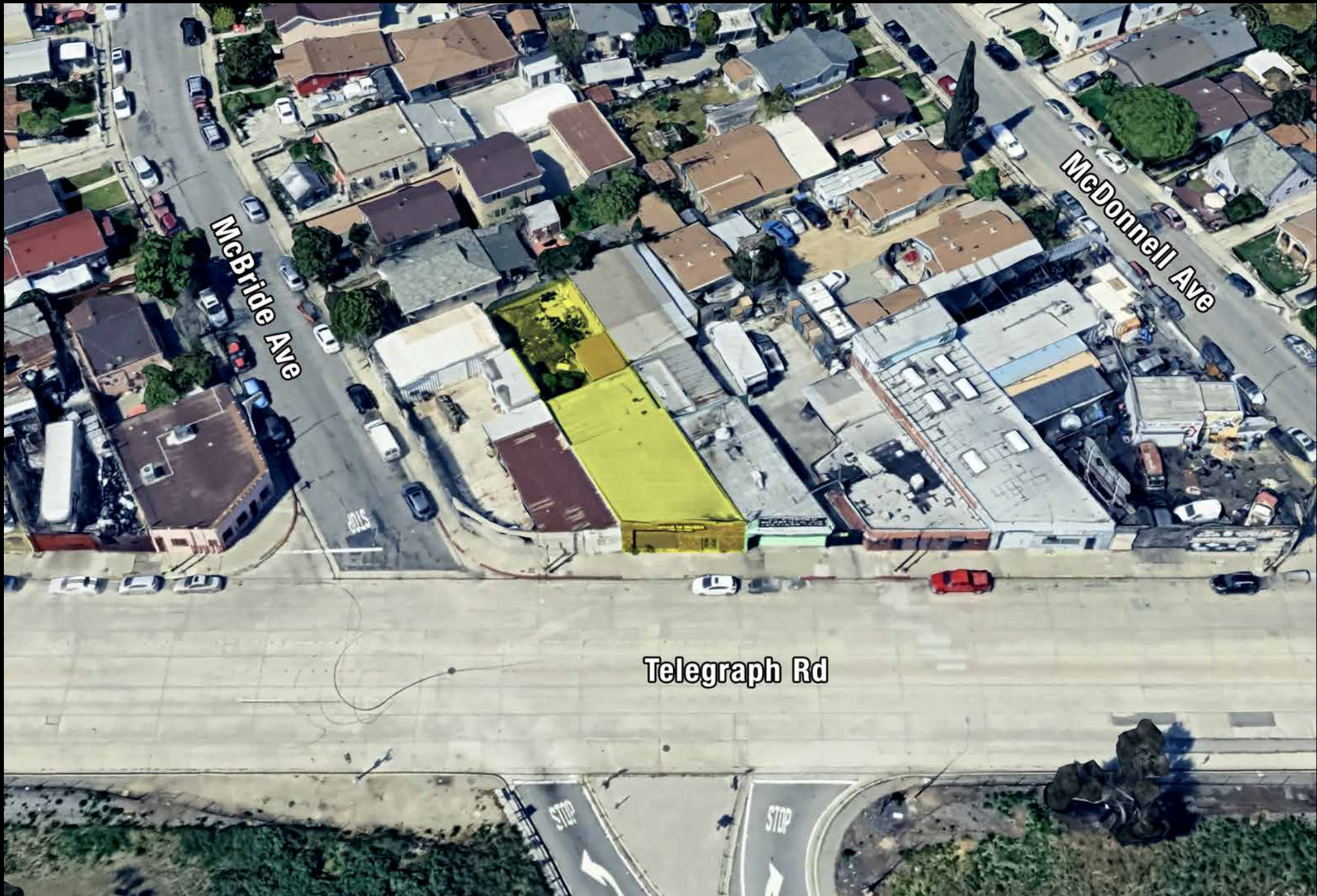
4641 TELEGRAPH RD, LOS ANGELES, CA 90022

- 3,500± SF industrial facility available
- Many possible uses!
Manufacturing, warehouse, flex, etc.
- Built 1924 — Masonry construction
- 4,475± SF of land
- Includes rear yard area
- 9' warehouse clear height
- Ground level loading door: 10x9
- 400A/240-460V/3-Ph 3W power service
- Small office area and 2 restrooms
- Located just north of the Golden State (I-5)
Freeway and 2 blocks east of the Long Beach (710)
Freeway
- One block south of Olympic Blvd

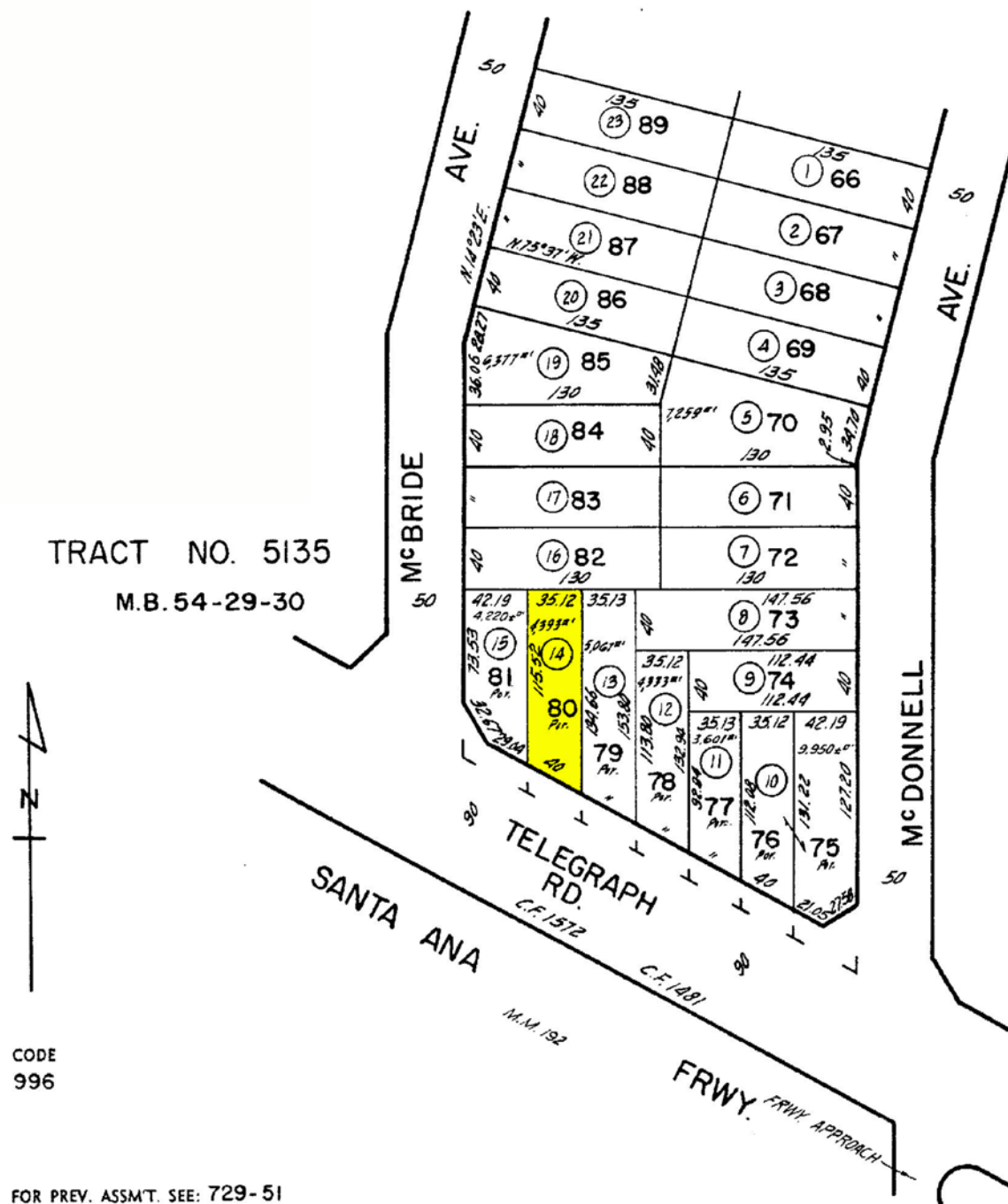
Lease Rental: \$6,000 Per Month (\$1.71 Per SF Gross)



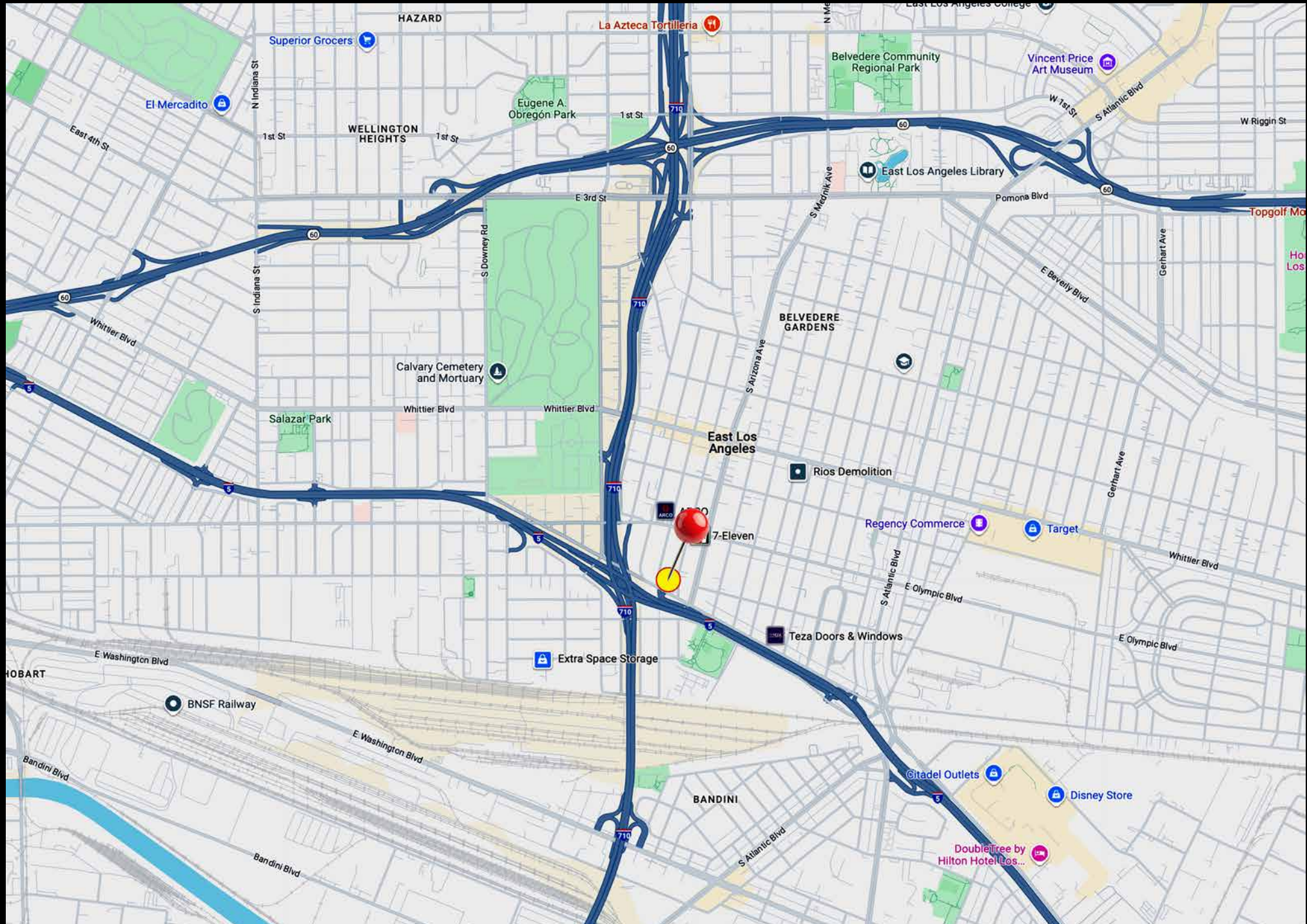
Property Aerial



Plat Map



Area Map



Industrial Facility For Lease

4641 Telegraph Rd
Los Angeles, CA 90022

3,500± SF Building
4,475± SF of Land

Exclusively offered by

Daniel Moussazadeh

Sales Associate

213.747.7959 office

310.999.9437 mobile

daniel@majorproperties.com

Lic. 02058572

MAJOR PROPERTIES

1200 W Olympic Blvd
Los Angeles, CA 90015

majorproperties.com

