

ROSAMOND LAND FOR SALE

Major Highway Location

LAND AREA: 87,120± SF | 2.39 ACRES



Sale Price Slashed! Seller Motivated!

7805 W ROSAMOND BLVD, ROSAMOND, CA 93560

- 87,120± SF of raw land available for sale (2.39 acres)
- Includes 924 SF mobile home (1990), water well, and all utilities on-site
- Located between 77th Street W and 78th Street W
- 5 miles west of Aerospace (14) Highway & 20 miles west of Edwards AFB
- Close to Lancaster and Tehachapi
- Zoned M-1 PD — Land Use: Mobile Home — APN 252-142-29-00-7
- Site is just south of and overlooks Willow Springs International Raceway
- Asking price: ~~\$150,000~~ \$120,000 (\$1.38 per SF land value)

For More Information, Please Contact:

SION KHAKSHOUR

213-210-7492

sion@majorproperties.com

LIC. 00697373

The information contained herein is furnished by sources we deem reliable, but for which we assume no liability. It is given in confidence and with the understanding that all negotiations pertaining to the property be handled through the listing office. All measurements are approximate.

ROSAMOND LAND FOR SALE

252-14

TRACT 2085 R/S. BK. 7 PG. 69
SW. 1/4 SEC. 16 T. 9 N. R. 13 W.

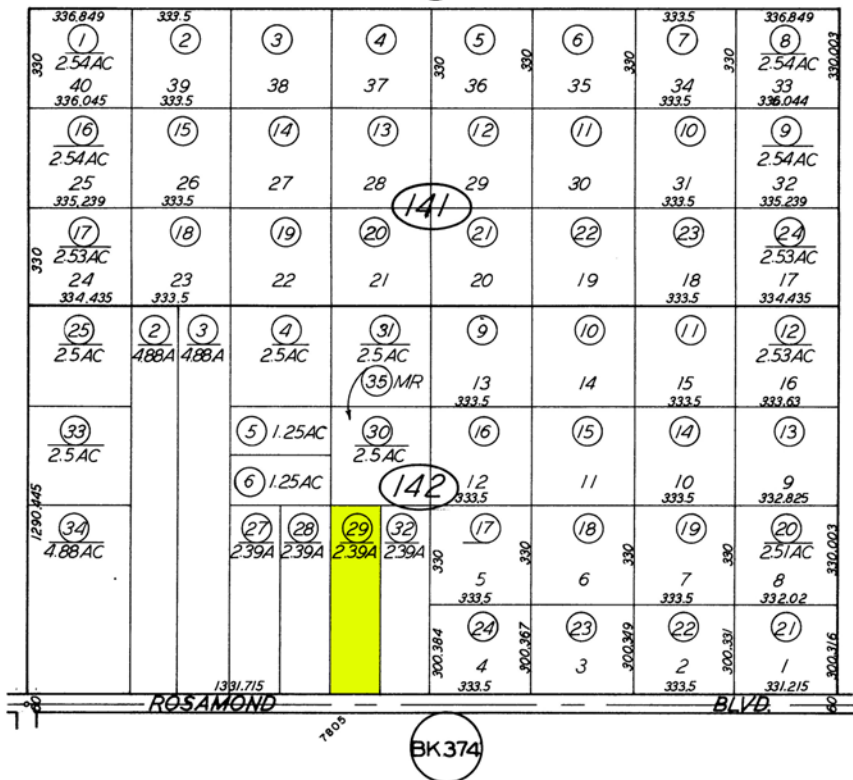
SCHOOL DIST. 119 - 4

252-14

(05)

(33)

Note:
All parcels 2.52ac. except where
noted.



1" = 400'

(17)

Filed : May 2, 1958

Revised: 06/08/2015

Note: This map is for assessment purposes only. It is not to be construed as portraying legal ownership or divisions of land for purposes of zoning or subdivision law.

ASSESSORS MAP NO. 252-14.....
COUNTY OF KERN



