



***Rent Reduced!***

# FOR LEASE

## GROUND FLOOR OFFICE SPACE

*Prime Beverly Hills Location  
Near Robertson Boulevard*

---

1,600± SF Suite Available

---

8906 W Olympic Blvd  
Beverly Hills, CA 90211



Commercial & Industrial Specialists

OFFERING MEMORANDUM

## Property Highlights

- Prime ground floor office space available for lease
- Fantastic Beverly Hills location 2 blocks west of Robertson Blvd and 4 blocks east of Doheny Drive
- Many possible applications: Attorney, CPA, therapist, architect, design, marketing, tech, etc.
- Open area, 4 private offices, conference room, one private restroom and one shared restroom, outdoor patio space
- Includes parking for 4 vehicles

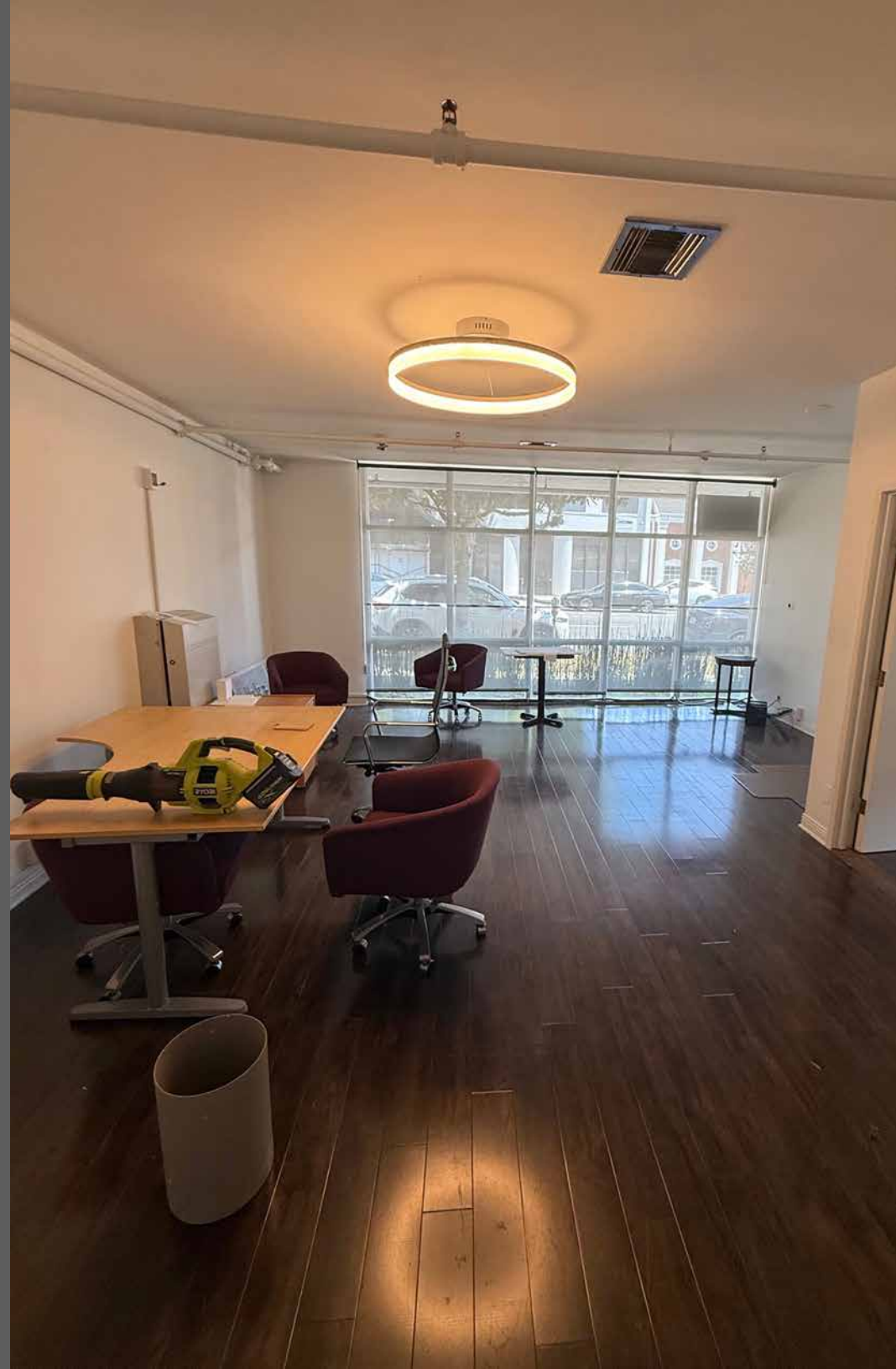
---

## Property Details

Available Area:	1,600± Sq.Ft.
Total Building Area:	5,360± Sq.Ft.
Stories:	2
Year Built:	1954
Zoning:	BHC3YY
Parking:	4 Surface Spaces

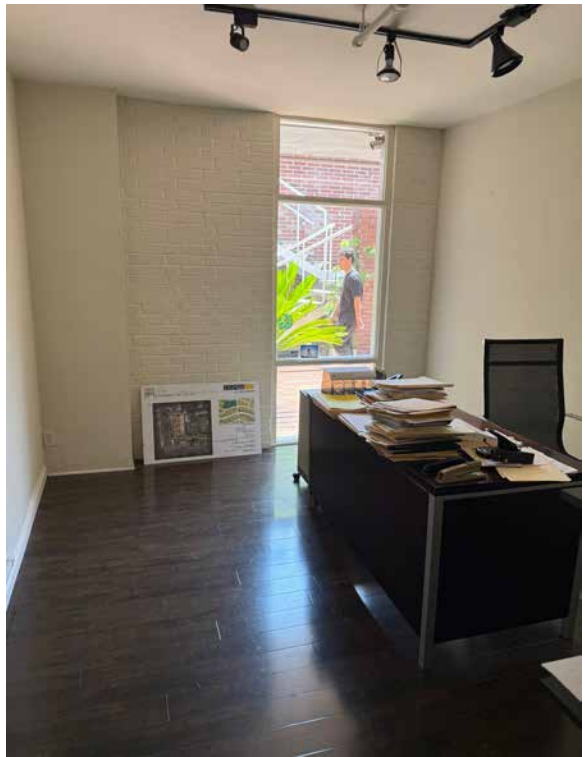
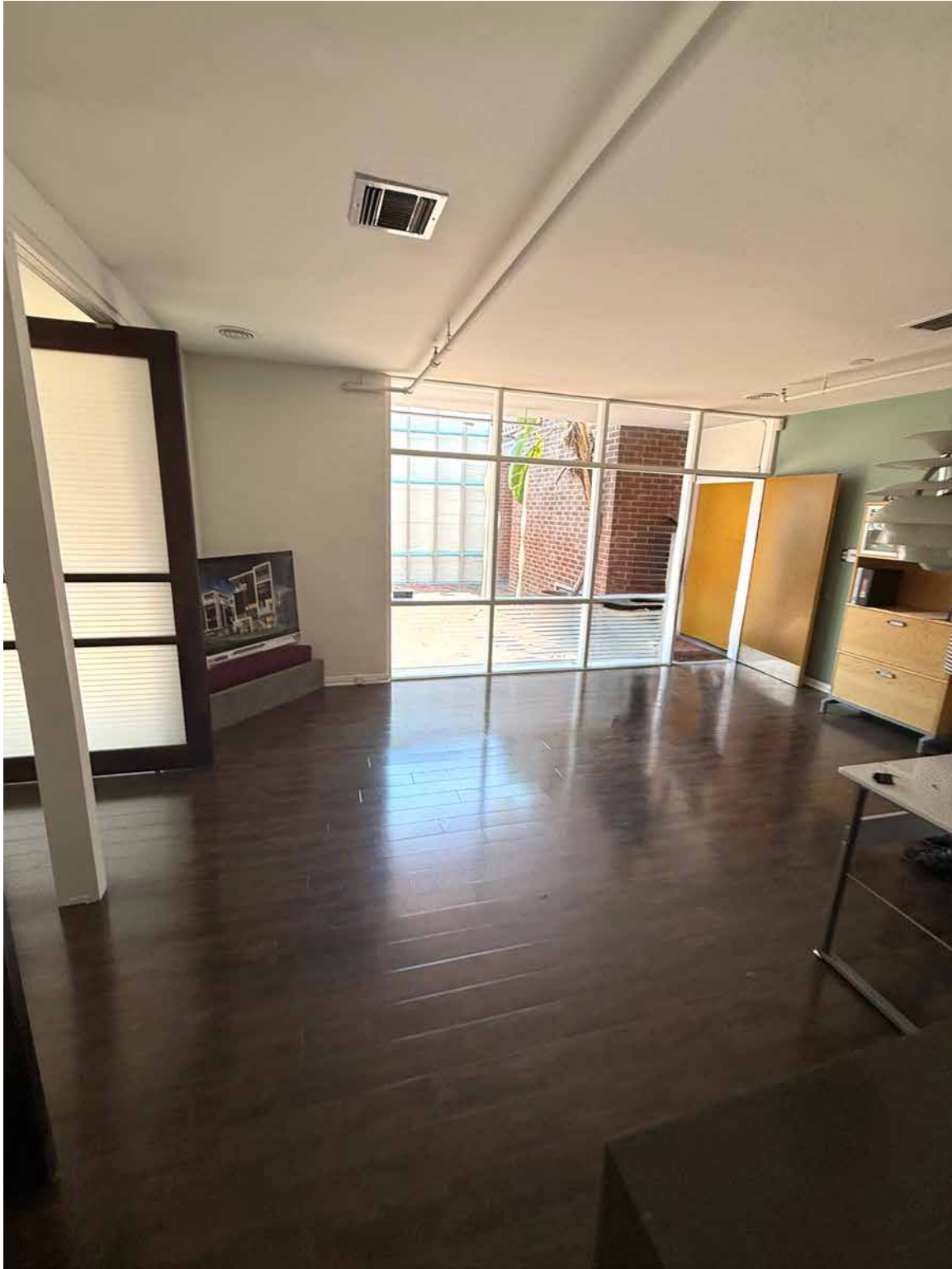
**Lease Rental: ~~\$8,000~~ \$5,999 Per Month**  
**(\$3.75 Per SF Gross)**

**8906 W OLYMPIC BLVD, BEVERLY HILLS, CA 90211**





# PROPERTY PHOTOS





# PROPERTY PHOTOS



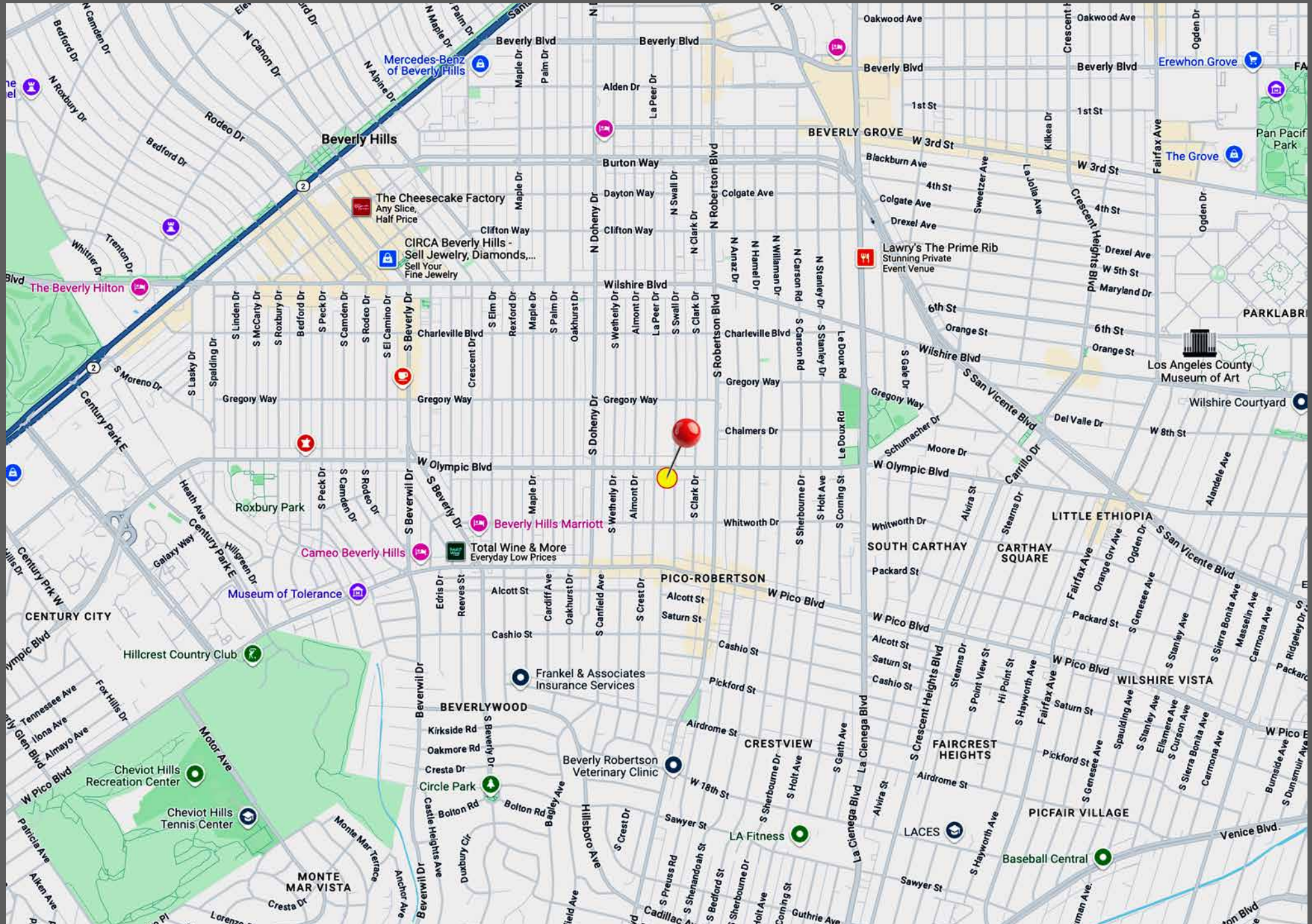


Aerial Photo





# Area Map





# FOR LEASE

8906 W OLYMPIC BLVD, BEVERLY HILLS, CA 90211

## Prime Ground Floor Office Space 1,600± SF Available

The information contained in this offering material is confidential and furnished solely for the purpose of a review by prospective Tenants of the subject property and is not to be used for any other purpose or made available to any other person without the express written consent of Major Properties or Compass.

This Brochure was prepared by Major Properties and Compass. It contains summary information pertaining to the Property and does not purport to be all-inclusive or to contain all of the information that a prospective Tenant may desire. All information is provided for general reference purposes only and is subject to change. The summaries do not purport to be complete or accurate descriptions of the full documents involved, nor do they constitute a legal analysis of such documents.

This information has been secured from sources we believe to be reliable. We make no representations or warranties, expressed or implied, as to the accuracy of the information. References to square footage or age are approximate. Recipient of this report must verify the information and bears all risk for any inaccuracies.

*Exclusively offered by*



**Daniel Moussazadeh**

310.999.9437 mobile

213.747.7959 office

[daniel@majorproperties.com](mailto:daniel@majorproperties.com)

DRE LIC. 02058572



**Charlie Rosenberg**

213.500.3512 mobile

213.222.1201 office

[charlie@majorproperties.com](mailto:charlie@majorproperties.com)

DRE LIC. 02178627