



INDUSTRIAL FOR LEASE

Prime Location 2 Blocks West of DTLA
6,500± SF of Space Available
1147 W 7th Street, Los Angeles, CA 90017

MAJOR PROPERTIES
REAL ESTATE
Commercial & Industrial Specialists
OFFERING MEMORANDUM



1147 W 7TH STREET, LOS ANGELES, CA 90017

Property Details

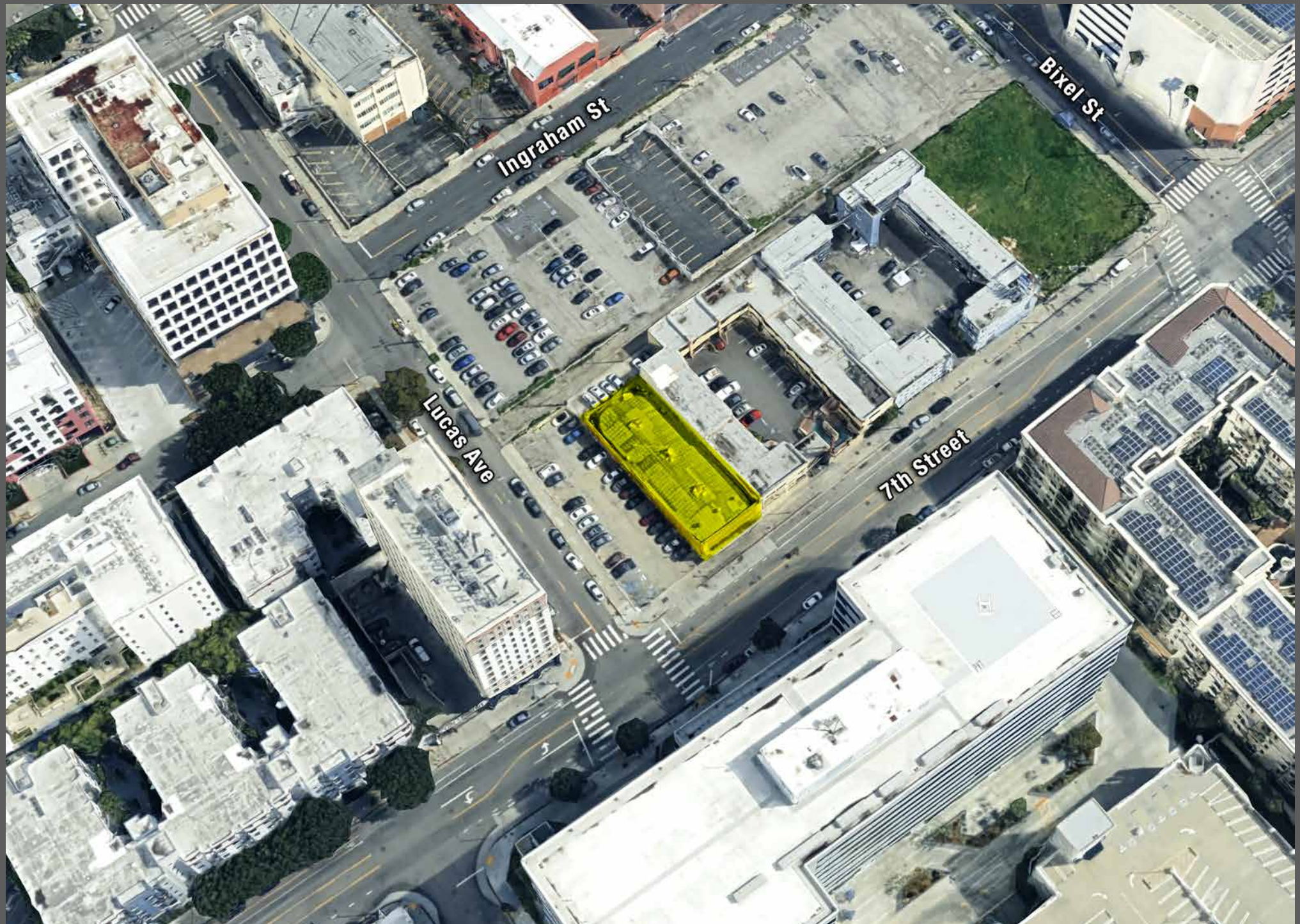
Available Area:	6,500± Sq.Ft.
Stories:	1
Year Built:	1941/1950
Zoning:	LACW
Ground Level Loading:	Yes
Parking:	Street

**Lease Rental: \$4,875 Per Month
(\$0.75 Per SF Gross)**

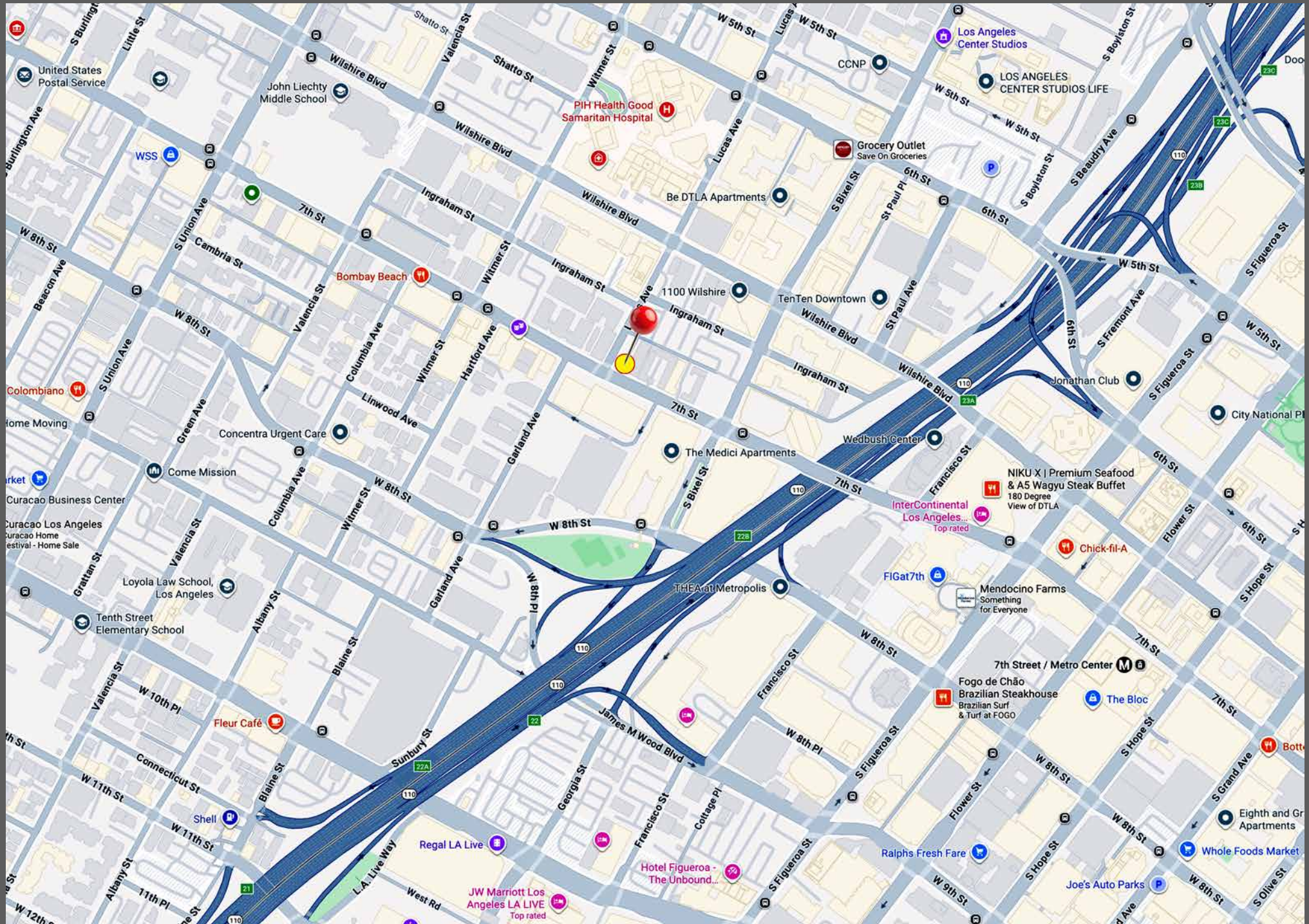
Property Highlights

- Ground floor warehouse space available for lease
- Potential retail or wholesale use
- Easy access to the 101 and 110 freeways
- Street parking only
- Two blocks west of the Harbor (110) Freeway and Downtown Los Angeles
- Two blocks south of Wilshire Boulevard

Aerial Photo



Area Map



Downtown Los Angeles Demographics

A PLACE TO WORK

288,000+ JOBS

\$95,000

Average
Household
Income



61%

30 - 54 Years Old

57% Postsecondary Education



65%

Currently work
3-5 days in DTLA



79%

Expect to be in
the office at least
half the time

A PLACE TO VISIT, SHOP, & DINE

17+ million VISITORS
per year



\$4.5+ billion
retail sales per year

745

Retail+F&B Businesses
per Square Mile



171

Food/Beverage
Businesses
per Square Mile

93

Walkscore



A PLACE TO LIVE

90,000+ RESIDENTS

\$93,000

Average
Household Income



26% All new
residential in the
City of LA
since 2010



24% Less
Income Spent
on Housing +
Transportation
than LA Average

41% Population
Growth 2010 - 2022



61%

25 - 54 Years Old



67%

Postsecondary
Education

90%

Residential Occupancy

46%

Walk/Bike/Transit
or Work from Home



FOR LEASE

1147 W 7TH STREET, LOS ANGELES, CA 90017

Industrial Facility For Lease 6,500± SF Available

The information contained in this offering material is confidential and furnished solely for the purpose of a review by prospective Tenants of the subject property and is not to be used for any other purpose or made available to any other person without the express written consent of Major Properties or Compass.

This Brochure was prepared by Major Properties and Compass. It contains summary information pertaining to the Property and does not purport to be all-inclusive or to contain all of the information that a prospective Tenant may desire. All information is provided for general reference purposes only and is subject to change. The summaries do not purport to be complete or accurate descriptions of the full documents involved, nor do they constitute a legal analysis of such documents.

This information has been secured from sources we believe to be reliable. We make no representations or warranties, expressed or implied, as to the accuracy of the information. References to square footage or age are approximate. Recipient of this report must verify the information and bears all risk for any inaccuracies.

Exclusively offered by



Daniel Moussazadeh

310.999.9437 mobile

213.747.7959 office

daniel@majorproperties.com

DRE LIC. 02058572



Charlie Rosenberg

213.500.3512 mobile

213.222.1201 office

charlie@majorproperties.com

DRE LIC. 02178627