

# LA FASHION MART CONDO FOR SALE

*Retail/Office Unit on 3 Floors*

AVAILABLE SF: 1,590 ±

TOTAL BUILDING SF: 134,148 ±



**800 E 12TH STREET, UNIT 105, LOS ANGELES CA 90021**

- 1,590 sq.ft. condo on basement, first and second floors in the LA Fashion Mart
- 105RS: 560 sq.ft. | 105R1: 510 sq.ft. | 105R2: 520 sq.ft.
- Ideal for retail or office use: Apparel, accessories, design, showroom, etc.
- Includes one parking space
- Prime DTLA Fashion District location
- Located at the southwest corner of 12th Street and Stanford Avenue
- Easy access to and from all Downtown Los Angeles freeways
- Assessor's parcel number 5132-012-113 — Zoned [LB1-WH1-5] [IX2-FA]
- Asking price: \$550,000 (\$345.91 per sq.ft.)

*For More Information, Please Contact*

**RON KIM**

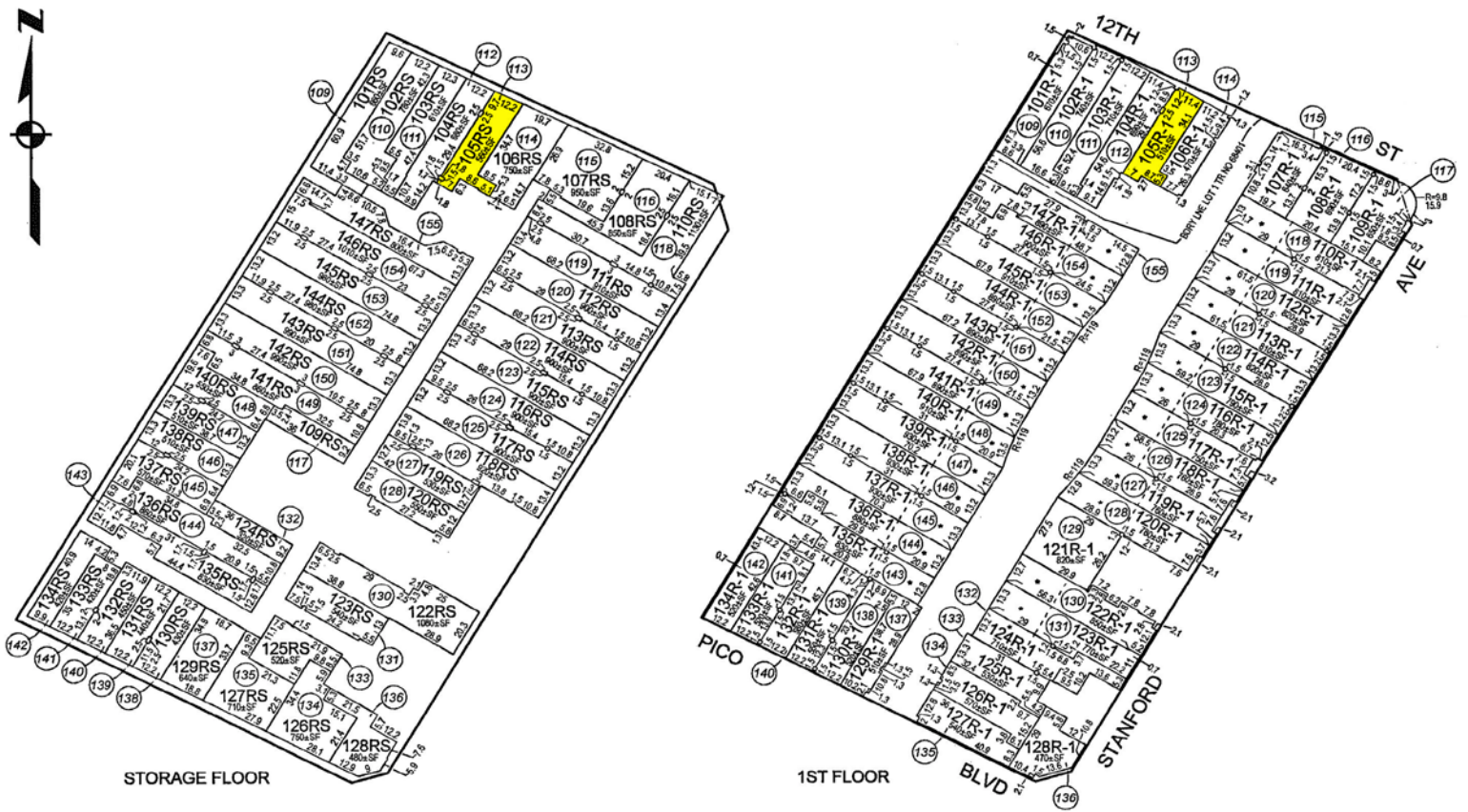
**213.222.1209**

**ron@majorproperties.com**

DRE LIC. 01891773

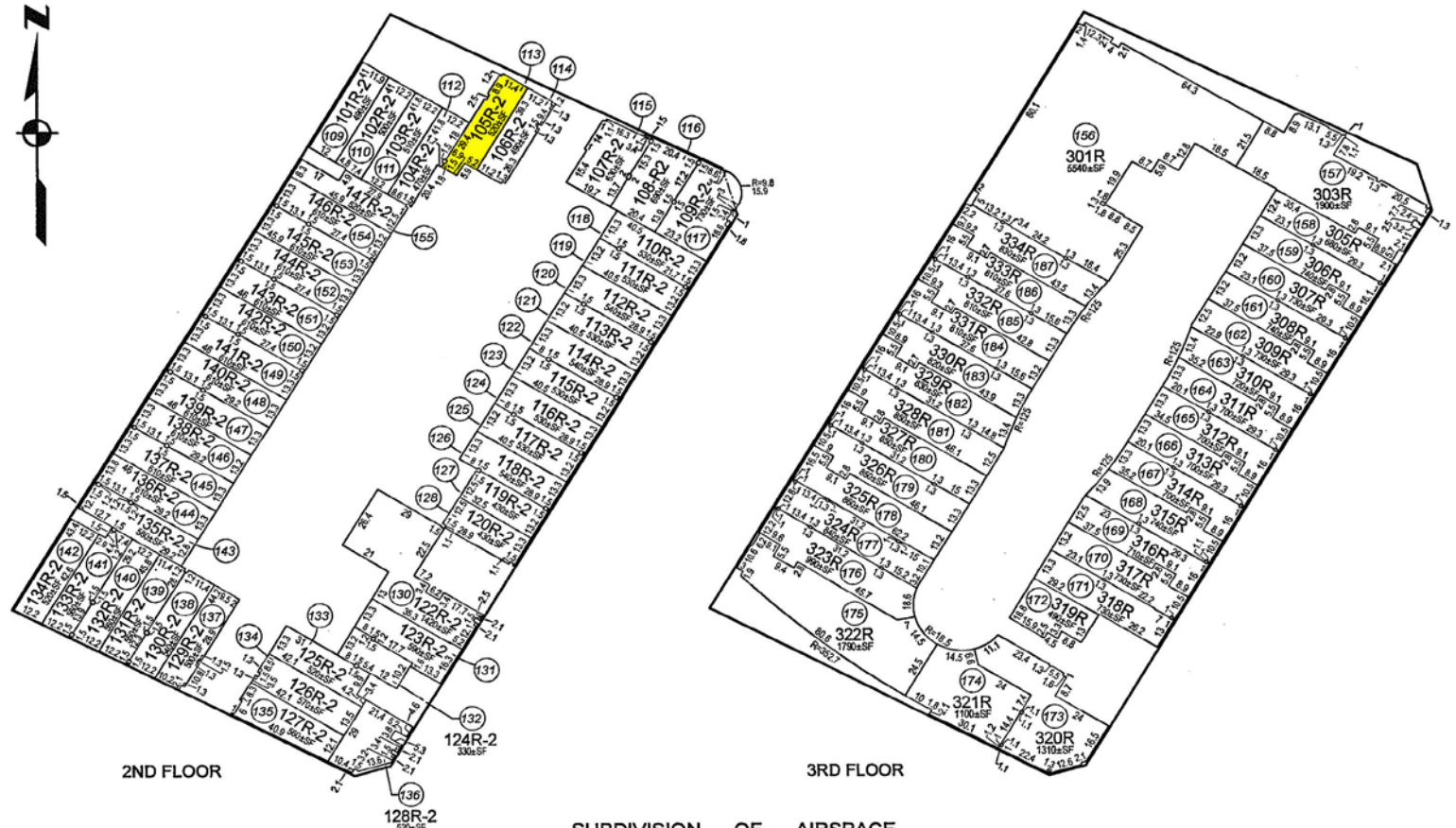
The information contained herein is furnished by sources we deem reliable, but for which we assume no liability. It is given in confidence and with the understanding that all negotiations pertaining to the property be handled through the listing office. All measurements are approximate.





SUBDIVISION OF AIRSPACE  
CONDOMINIUM TRACT NO 68401

FOR COMMON AREA SEE SHEET 1  
SEE RECORDED CONDOMINIUM PLAN FOR COMPLETE DIMENSIONS AND ELEVATIONS OF UNITS  
SOME DIMENSIONS ARE MISSING OR DO NOT BALANCE IN THE RECORDED CONDO PLAN  
\* REPRESENTS A PORTION OF A UNIT OPEN TO FLOOR ABOVE  
PORTION OF UNIT 109 ENDOACHES UPON STANFORD AVE AND 12TH ST  
PORTION OF UNIT 110 ENDOACHES REI OW THE STREET

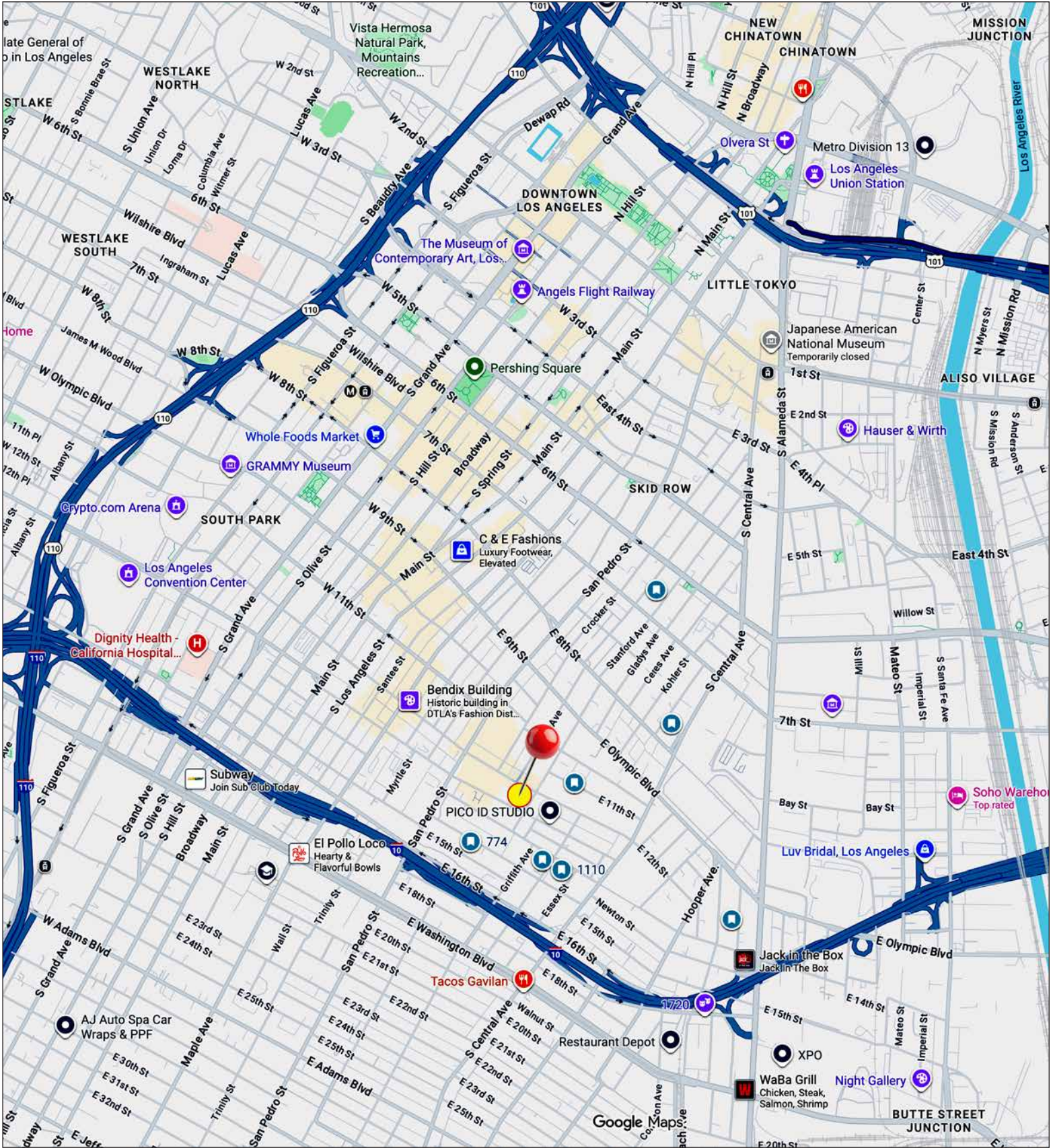


SUBDIVISION OF AIRSPACE  
CONDOMINIUM TRACT NO 68401

FOR COMMON AREA SEE SHEET 1  
SEE RECORDED CONDOMINIUM PLAN FOR COMPLETE DIMENSIONS AND ELEVATIONS OF UNITS  
SOME DIMENSIONS ARE MISSING OR DO NOT BALANCE IN THE RECORDED CONDO PLAN  
PORTION OF UNIT 109 OVERHANGS ON STREET



# LA FASHION MART CONDO FOR SALE



**MAJOR PROPERTIES**  
REAL ESTATE  
Commercial • Industrial • Residential

**1200 West Olympic Boulevard, Los Angeles, California 90015**  
**213.747.4151 • fax 213.749.7972 • [www.majorproperties.com](http://www.majorproperties.com)**

