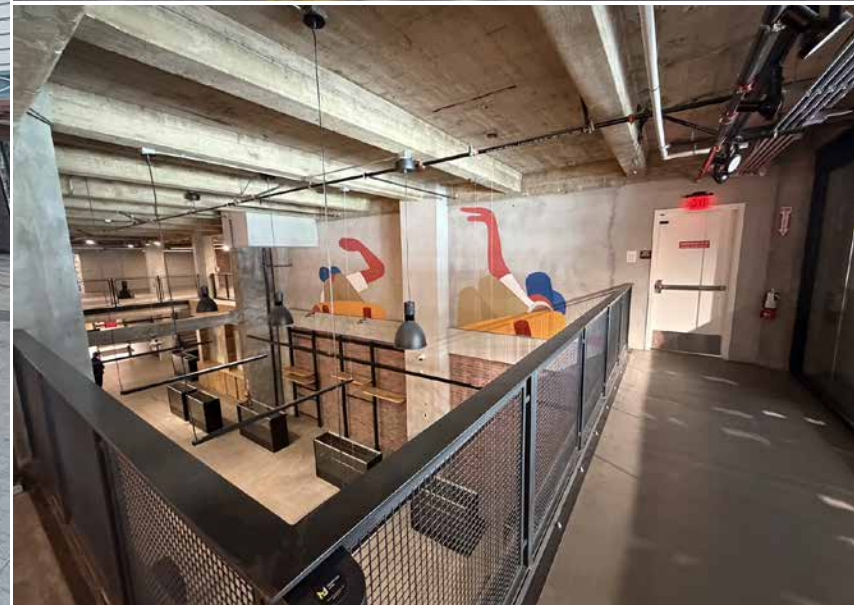
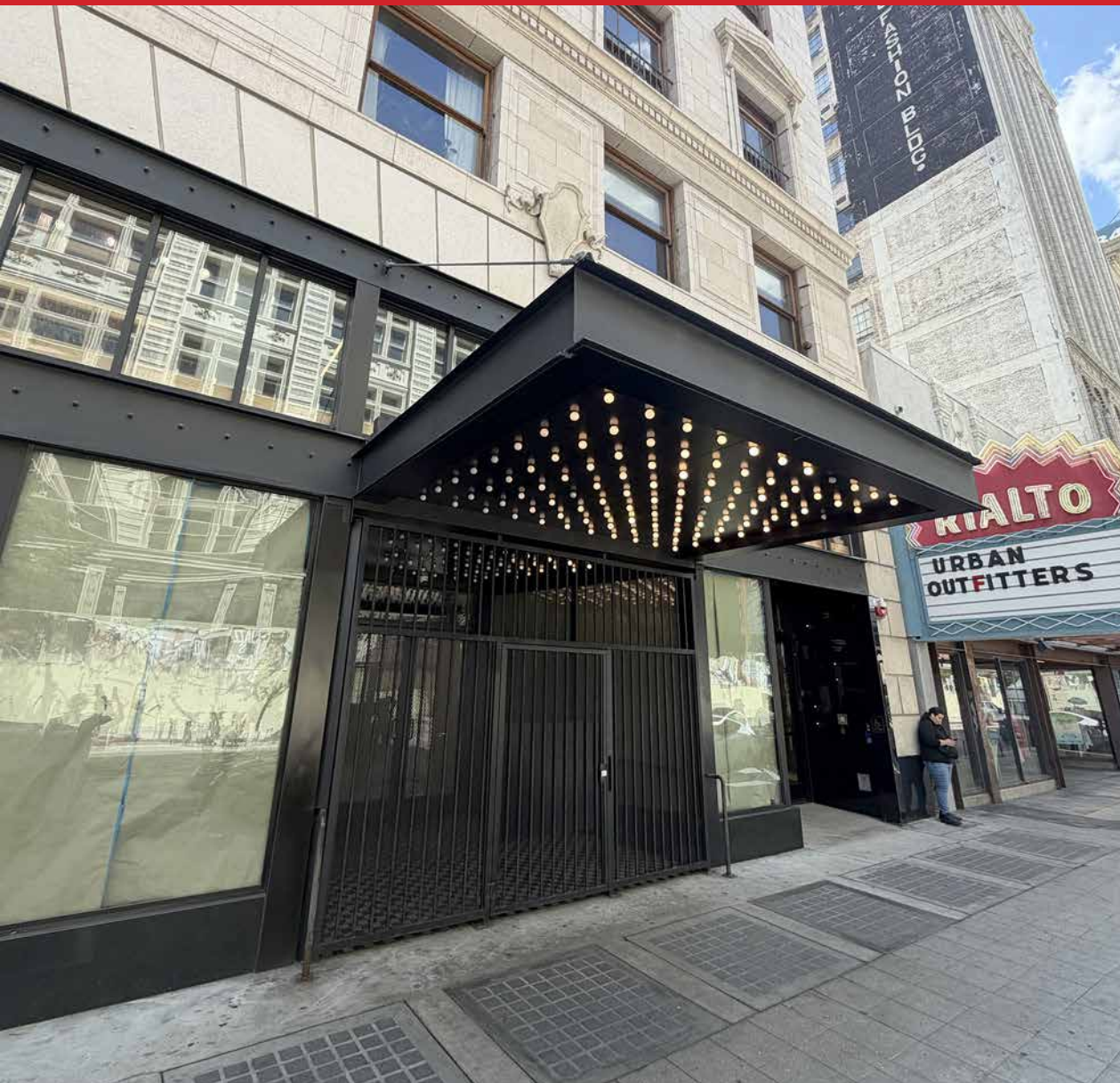


PRIME DTLA HISTORIC CORE RETAIL FOR LEASE



Jeffrey Jankaew
562.980.2415
DRE LIC. 02253639



Samuel Luster
818.584.4344
DRE LIC. 02012790



Mark Silverman
213.747.0379
DRE LIC. 01310992



Bradley Luster
213.276.2483
DRE LIC. 00913803



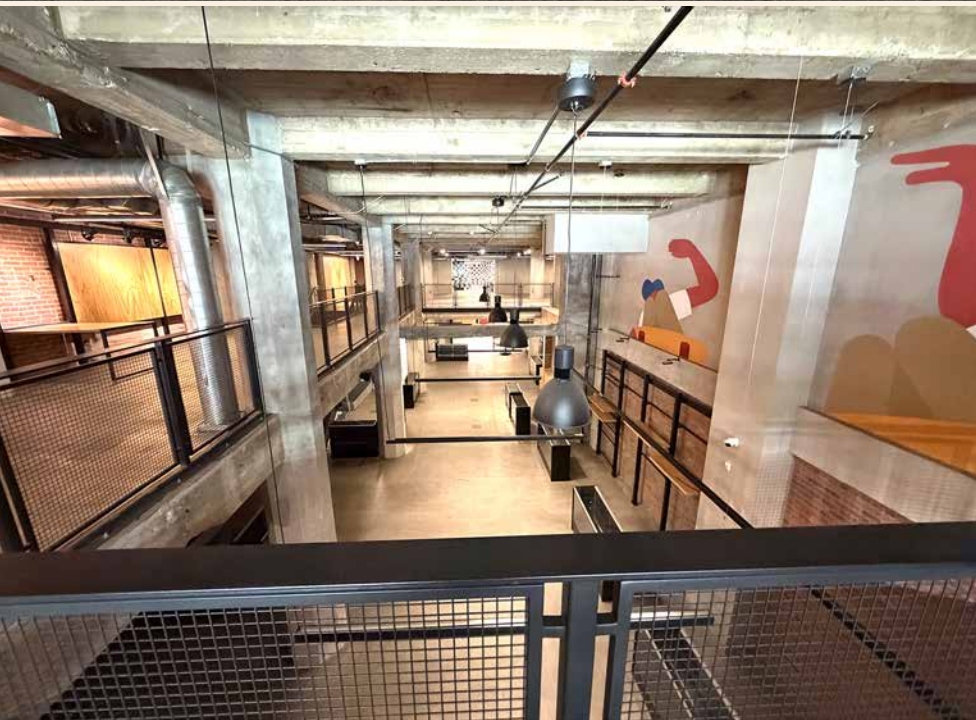
808 S BROADWAY LOS ANGELES, CA 90014

PROPERTY DETAILS

Available Area:	±8,317 SF
Floor:	Ground
Mezzanine:	Yes
Total Building Area:	±64,604 SF
Floors:	9
Year Built:	1930
Zoning:	LAC5
Traffic Count:	24,955 Vehicles Per Day (2025)

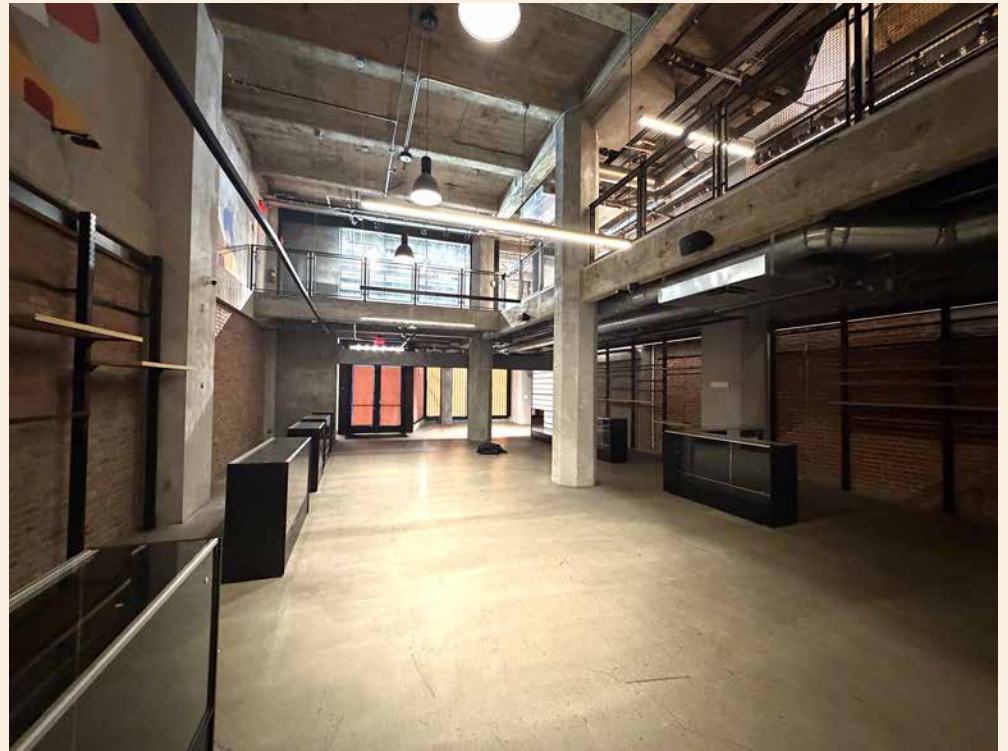
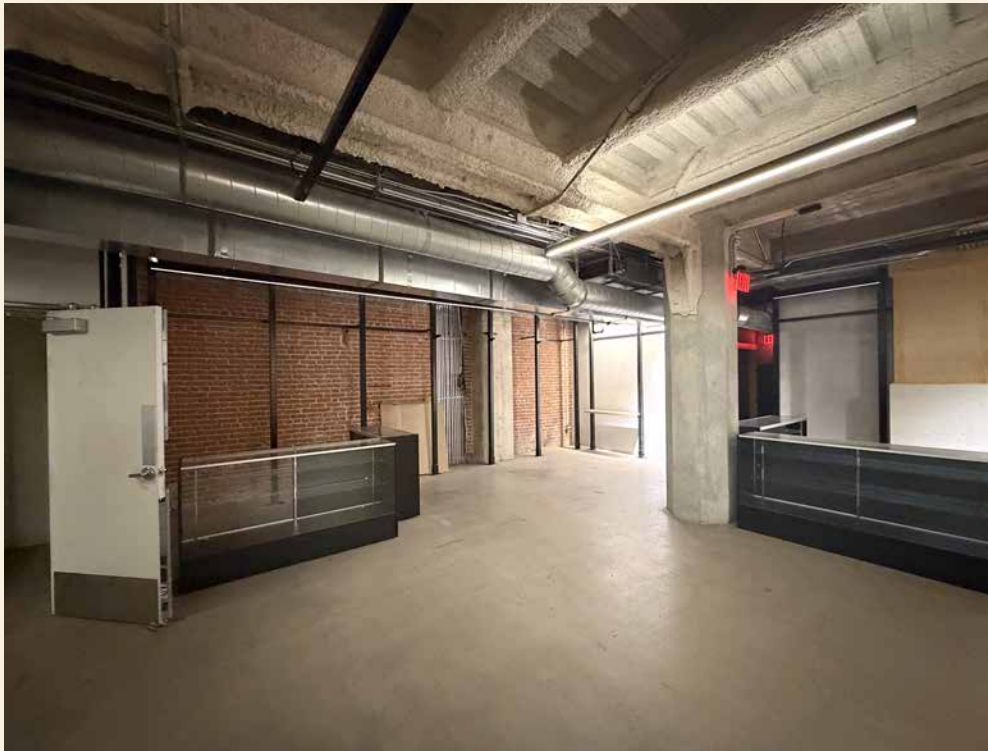
PROPERTY HIGHLIGHTS

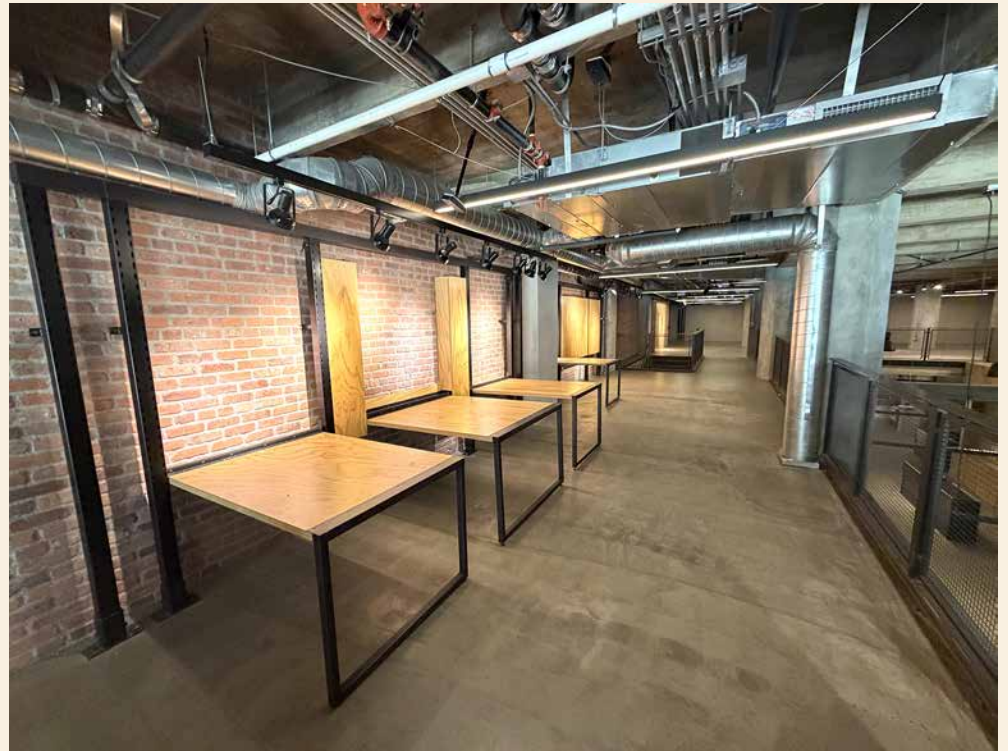
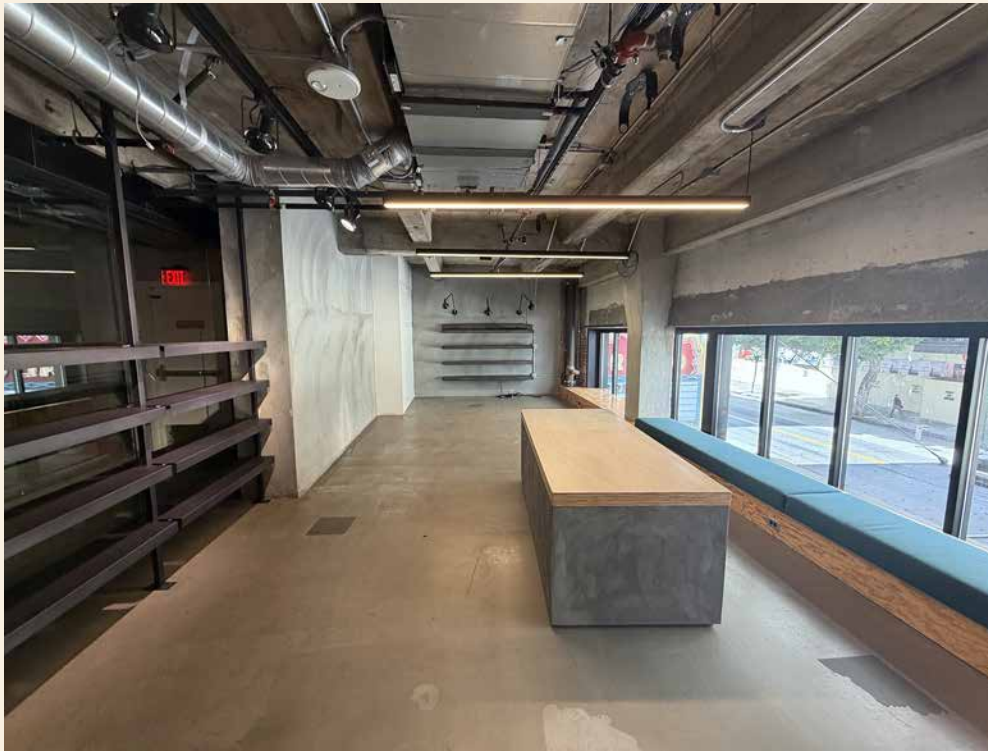
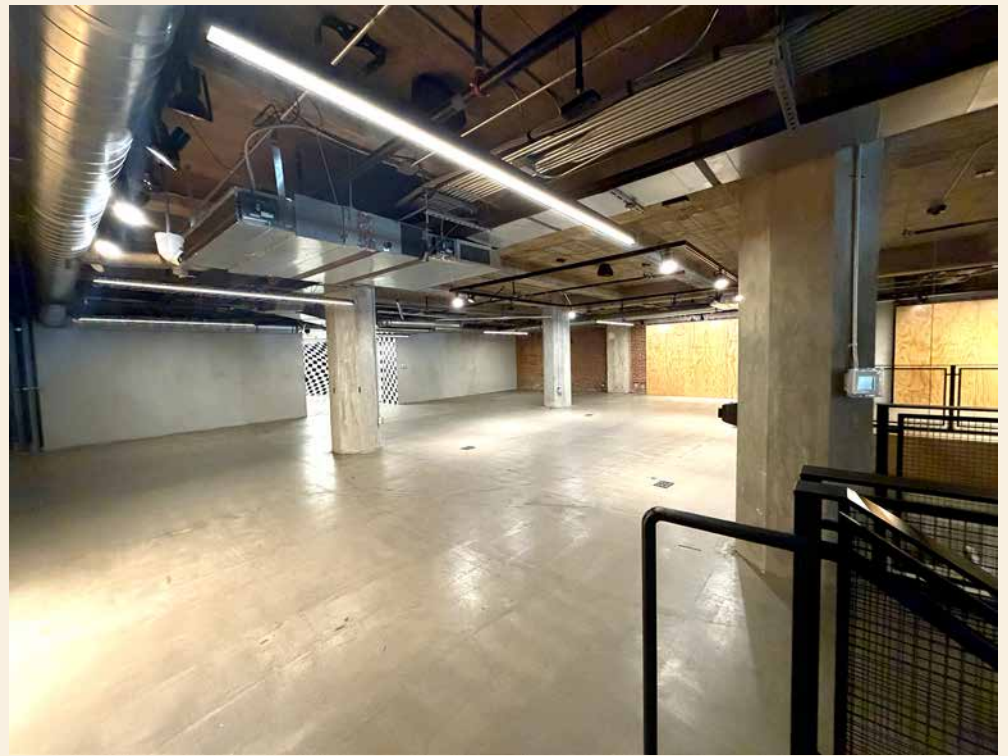
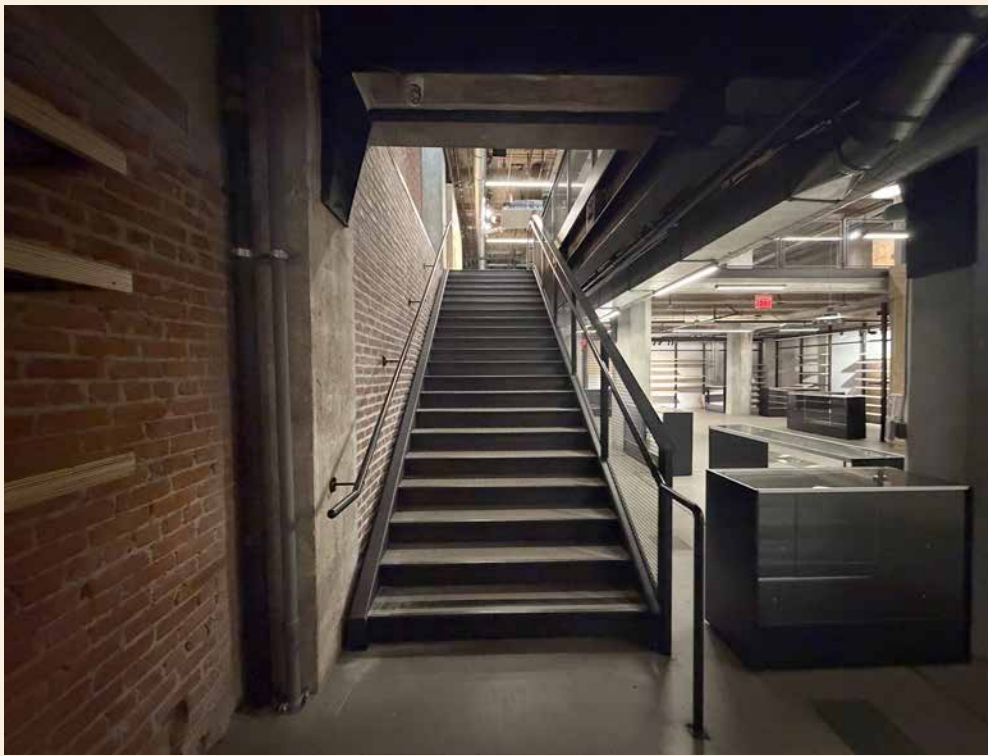
- Prime DTLA ground floor retail lease opportunity
- Busy Historic Core location next to the Apple Tower Store and Urban Outfitters
- Great character with red brick walls and polished concrete floors
- Fully functional ground floor and mezzanine levels
- Space is in excellent condition: Must see!
- Fantastic customer saturated location
- Over 3,000 apartments within a 2-block radius!
Includes Broadway Palace Apartments, Eighth & Grand Apartments, South Park & Olympic by Windsor Apartments, Atelier Apartments, and Premiere Towers
- Nearby amenities include Level Hotel, Bottega Louie, Shake Shack, Whole Foods, Sonoratown, and Pershing Square



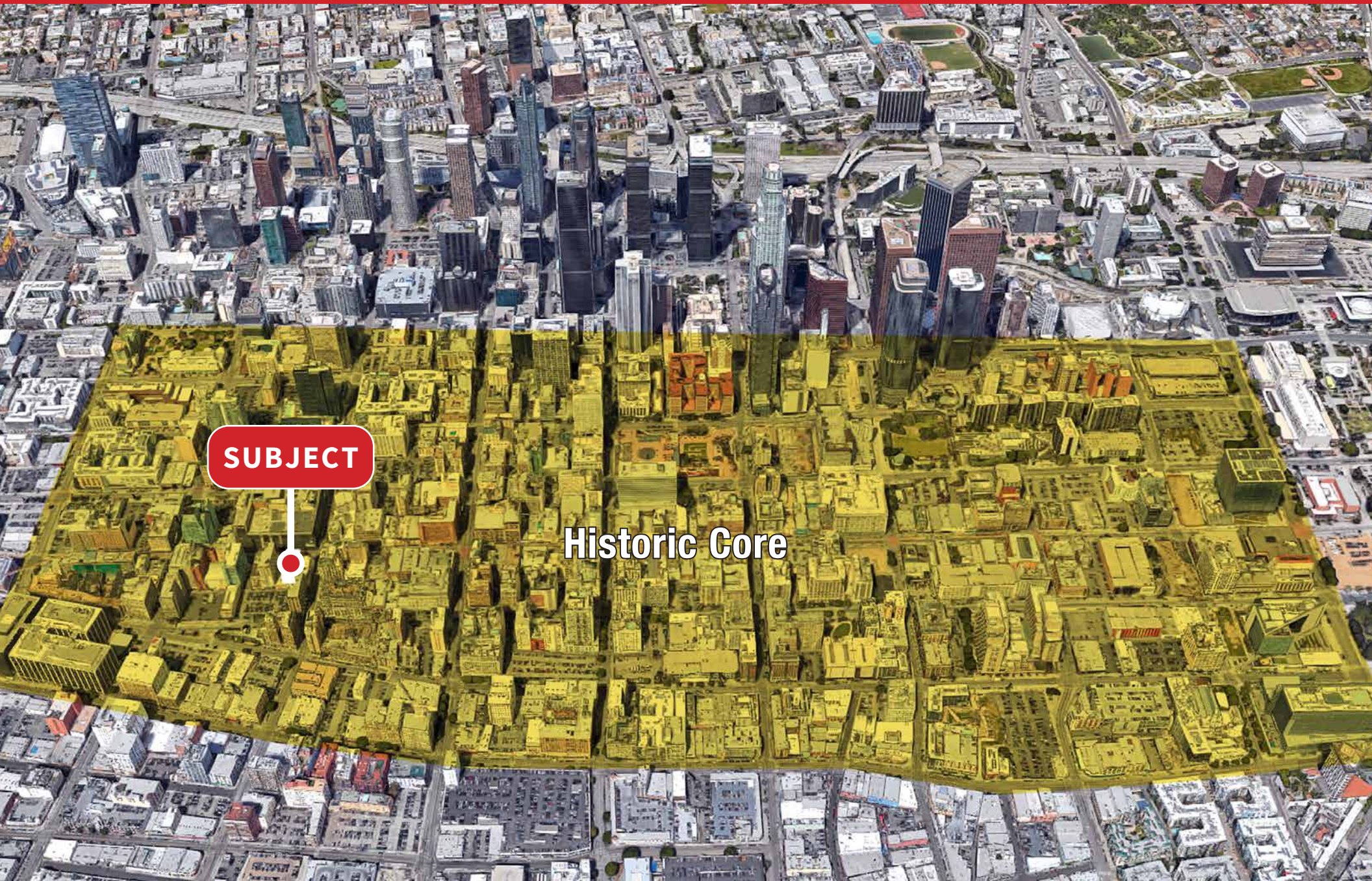
LEASE: \$14,555 PER MONTH (\$1.75 PER SF GROSS)

TERM: NEGOTIABLE





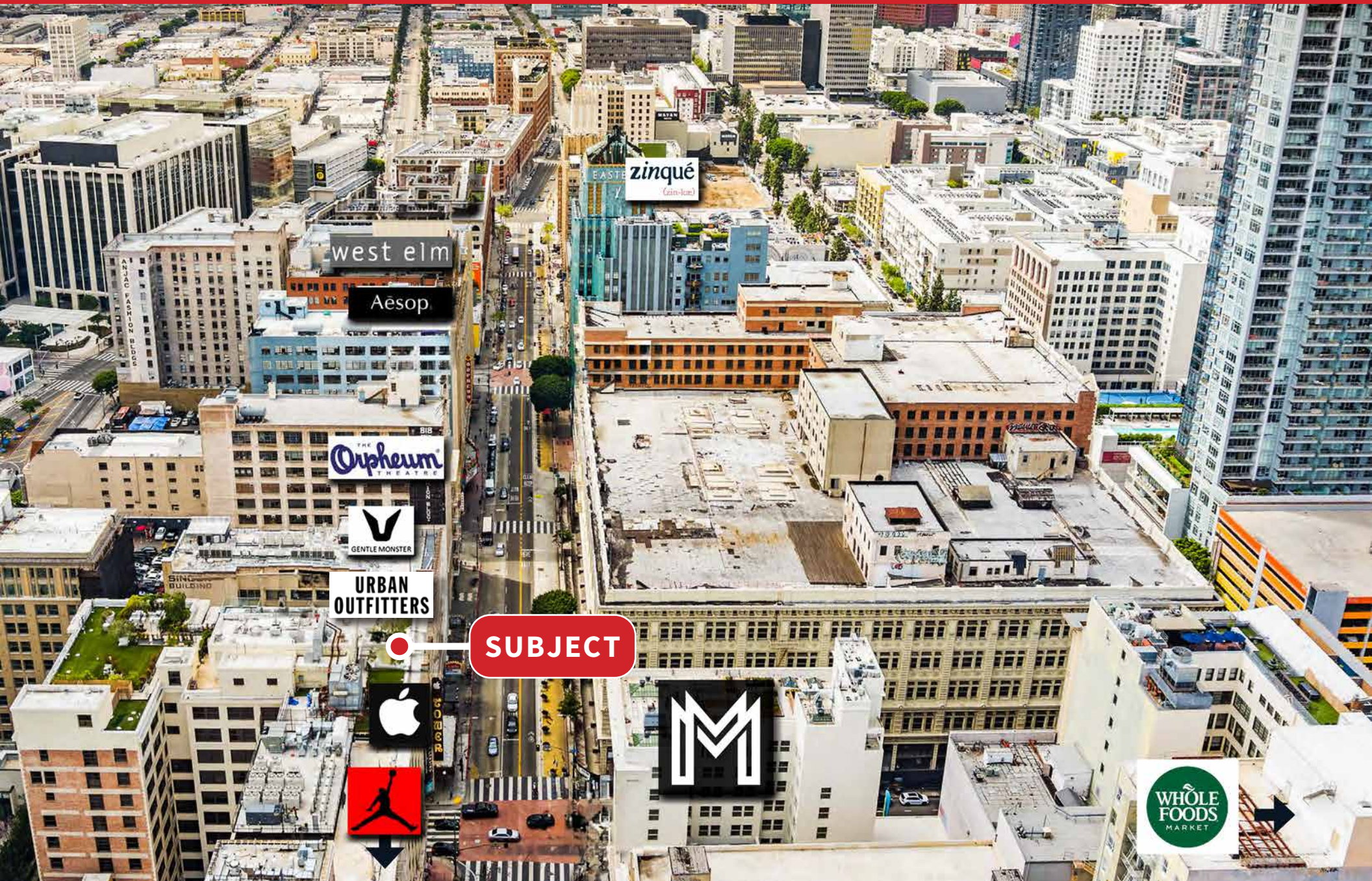
AERIAL PHOTO



SUBJECT

Historic Core

HISTORIC CORE AMENITIES



FOR LEASE

808 S BROADWAY, LOS ANGELES, CA 90014

Prime Ground Floor Retail | ±8,317 SF DTLA Historic Core Location

For More Information, Please Contact:



Jeffrey Jankaew
562.980.2415
jjankaew@majorproperties.com
DRE LIC. 02253639



Samuel P Luster
818.584.4344
sam@majorproperties.com
DRE LIC. 02012790



Mark D Silverman
213.747.0379
mark@majorproperties.com
DRE LIC. 01310992



Bradley A Luster
213.276.2483
brad@majorproperties.com
DRE LIC. 00913803

The information contained in this offering material is confidential and furnished solely for the purpose of a review by prospective Tenants of the subject property and is not to be used for any other purpose or made available to any other person without the express written consent of Major Properties.

This Brochure was prepared by Major Properties. It contains summary information pertaining to the Property and does not purport to be all-inclusive or to contain all of the information that a prospective Tenant may desire. All information is provided for general reference purposes only and is subject to change. The summaries do not purport to be complete or accurate descriptions of the full documents involved, nor do they constitute a legal analysis of such documents.

This information has been secured from sources we believe to be reliable. We make no representations or warranties, expressed or implied, as to the accuracy of the information. References to square footage or age are approximate. Recipient of this report must verify the information and bears all risk for any inaccuracies.