

# DTLA RETAIL SPACE FOR LEASE

Prime DTLA Fashion District Location

2,200 SF



910 SANTEE STREET, LOS ANGELES, CA 90015

## PROPERTY HIGHLIGHTS

- Ground floor retail/wholesale store for lease
- Ideal for fashion, clothing, accessories, etc.
- Includes a restroom
- Good clearance height
- Abundant street and contract parking
- Located just south of 9th Street
- Lease: \$5,500 per month (\$2.50 per SF MG)
- Term negotiable

## PROPERTY DETAILS

Available Area .....2,200± SF  
Zone ..... LA M2-4  
Year Built ..... 1922  
Construction ..... Masonry  
Restrooms ..... 1  
Parking ..... Street

For More Information, Please Contact

**JEFFREY JANKAEW**

562-980-2415

[jjankaew@majorproperties.com](mailto:jjankaew@majorproperties.com)

Lic. 02253639

**RENE MEXIA**

213-446-2286

[rene@majorproperties.com](mailto:rene@majorproperties.com)

Lic. 01424387

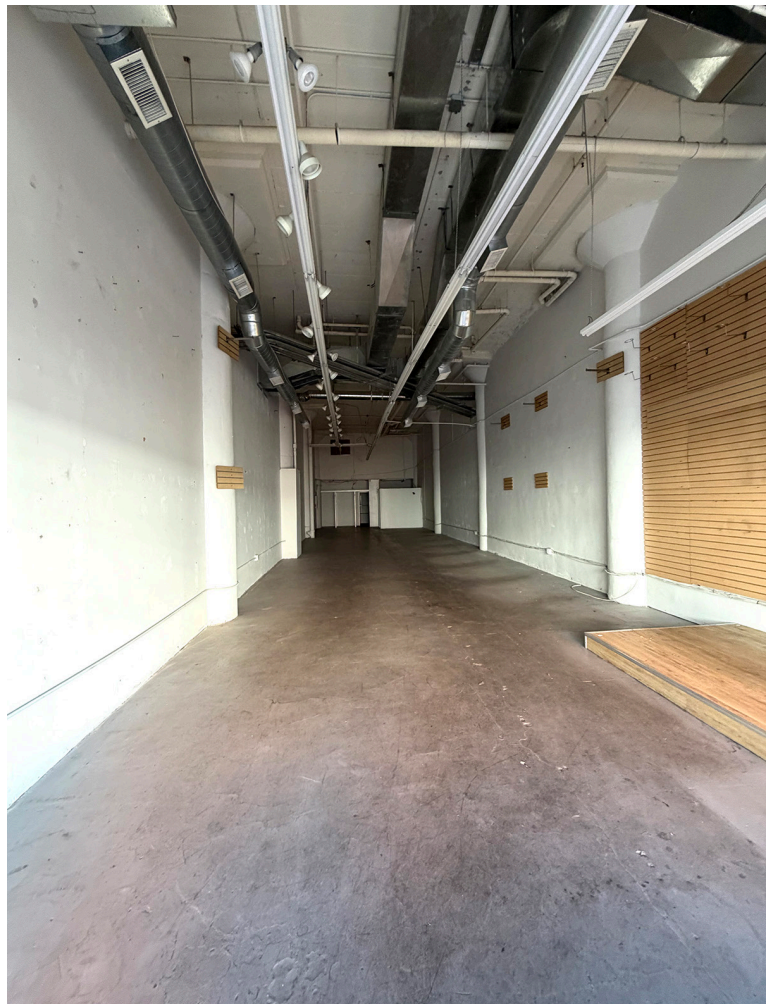
**JEFF LUSTER**

213-804-3013

[jeff@majorproperties.com](mailto:jeff@majorproperties.com)

Lic. 00636424

The information contained herein is furnished by sources we deem reliable, but for which we assume no liability. It is given in confidence and with the understanding that all negotiations pertaining to the property be handled through the listing office. All measurements are approximate.





# DTLA RETAIL SPACE FOR LEASE

